

# CHESNEYS

THE ENGLISH HERITAGE COLLECTION



# The English Heritage Collection

As a charity, English Heritage cares for over a million objects and hundreds of historic sites in every part of England. They open them up, share their stories and find new ways for everybody to enjoy, learn, play and create. By shopping from this range, you're helping the charity to be there for heritage.

## THE BRINKBURN

The Brinkburn is modelled after a simple stone fireplace situated in a neo-Gothic style Manor House built on the site of the old monastic buildings at Brinkburn Priory, Northumberland.



## THE ELTHAM

Named after the magnificent Art Deco mansion built by Stephen and Virginia Courtauld next to the medieval Great Hall of Eltham Palace, The Eltham epitomises the elegance of Art Deco design.



## THE BELSAY

Belsay Hall, a mansion built in Northumberland's border country and completed in 1817, is the inspiration for the Belsay chimney piece. The Hall is a masterpiece in the Greek Revival style.



## THE BROCKHURST

Fort Brockhurst was built in the mid 19th century to protect Portsmouth and its harbour against French invasion. The officer's mess has its original cast iron chimneypiece in situ which is in the style of an earlier Regency design.



## THE DOWN HOUSE

Down House was built in the early 18th century but was extensively modernised in the late 18th century. It was the home of the great Naturalist, Charles Darwin.



## THE WALMER

The Walmer chimneypiece is modelled on the fireplace in the entrance hall to Walmer Castle, a country house modified from a military fortification originally constructed in 1540.

## The Brinkburn



The Brinkburn is modelled after a simple stone fireplace situated in a neo-Gothic style Manor House built during the 19th century on the site of the old monastic buildings at Brinkburn Priory, Northumberland. This fireplace was chosen for its simple architectural form and is carved in a rough limestone that has been given a patinated finish to reflect the age and condition of the original.

It is shown with a Swans Nest fire basket and Burton Andirons from Chesney's collection of traditional fire baskets and hand forged andirons.

## The Eltham



Named after the magnificent Art Deco mansion built by Stephen and Virginia Courtauld next to the medieval Great Hall of Eltham Palace, The Eltham epitomises the elegance of Art Deco design. The fireplace which is inspired by an original in the building is fabricated from solid block in polished Ivory Travertine and displays perfect proportions and deceptive simplicity.

It is shown with the Kenwood III fire basket which also features in Chesneys English Heritage Collection.

## The Belsay



The Belsay is inspired by a neo-classical chimneypiece at Belsay Hall, a mansion built in Northumberland's border country and completed in 1817. The Hall is a masterpiece in the Greek Revival style and one of the earliest examples of its use in domestic architecture in England. The chimneypiece, carved in Statuary marble, features an inverted breakfront corniced mantel shelf, a running frieze adorned with rosettes and stop flutes and with a pronounced and unusual internal bolection style moulding.

The Belsay is shown with the Osterley fire basket in steel with engraved detail from Chesney's range of period fire baskets.

## The Brockhurst



Fort Brockhurst is one of several forts built in the mid 19th century to protect Portsmouth and its harbour against French invasion. The officers' mess has its original cast iron chimneypiece in situ which is in the style of an earlier Regency design. The Brockhurst draws from the detail of the original chimneypiece but is in carved Statuary marble and features engaged fluted ionic columns beneath capitals decorated with lotus leaves and a delicately carved frieze which displays anthemion motifs within a recessed ovoid panel.

It is shown with The Kenwood I fire basket from The English Heritage Collection.

## The Down House



Down House was the home of the great Naturalist, Charles Darwin. He lived there with his family for 40 years, during which time he wrote his revolutionary work 'On the theory of evolution by natural selection'. The property was built in the early 18th century but was extensively modernised through the 19th century.

The Down House chimneypiece is carved in Italian Carrara marble and reproduces a very popular form of Regency chimneypiece, featuring bullseye corner blocks and convex fielded frieze and jamb panels.

The Down House is shown with the Britton IV Arched register grate from Chesney's collection of register grates.

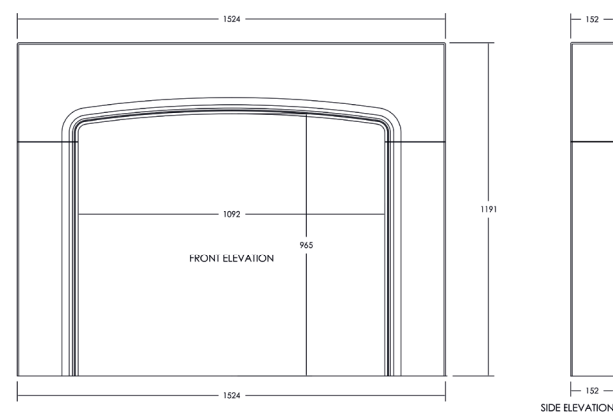
## The Walmer



The Walmer chimneypiece is modelled on the fireplace in the entrance hall to Walmer Castle, a country house modified from a military fortification originally constructed for King Henry VIII in 1540. Walmer became the official residence of the Lord Warden of the Cinque Ports in the 18th century and holders of the office included Queen Elizabeth the Queen Mother and The Duke of Wellington, who died at Walmer in 1852. Carved in vibrantly veined Arabescato marble, The Walmer is an elegant 18th century chimneypiece featuring jambs and header of bolection form beneath a fluted frieze supporting a corniced mantel shelf.

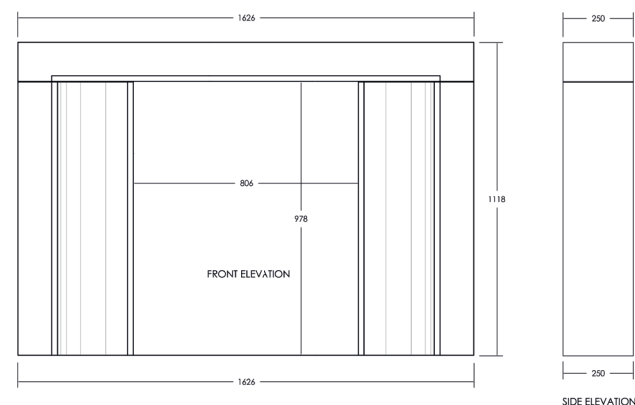
The Walmer is shown with the Kenwood II fire basket from The English heritage Collection.

## Fireplace dimensions



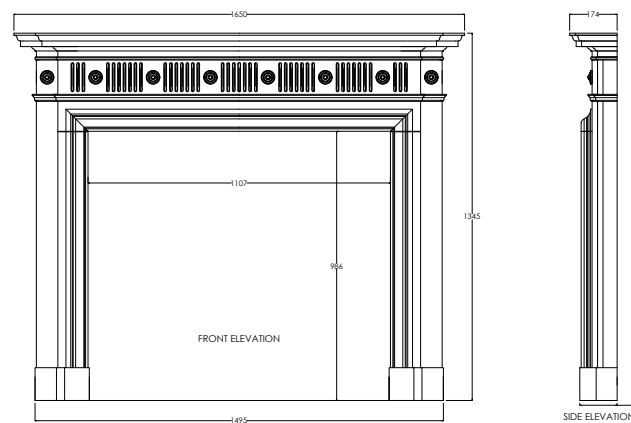
### THE BRINKBURN

Overall size 1524mmW x 1191mmH  
Opening 1092mmW x 965mmH



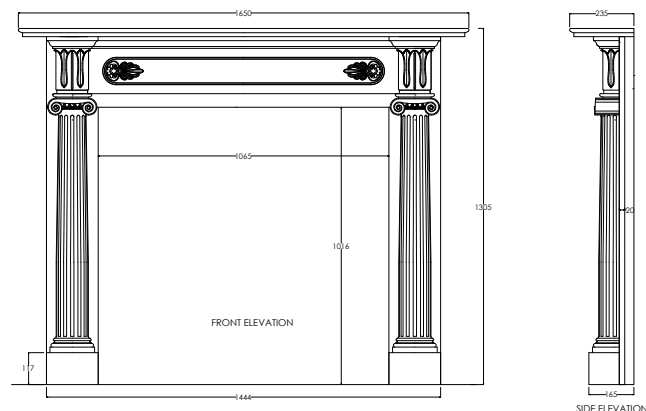
### THE ELTHAM

Overall size 1626mmW x 1118mmH  
Opening 806mmW x 978mmH



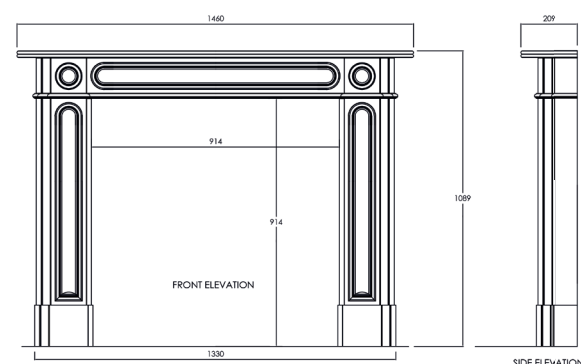
### THE BELSAY

Overall size 1495mmW x 1345mmH  
Opening 1107mmW x 986mmH  
Shelf 1650mmW x 174mmD



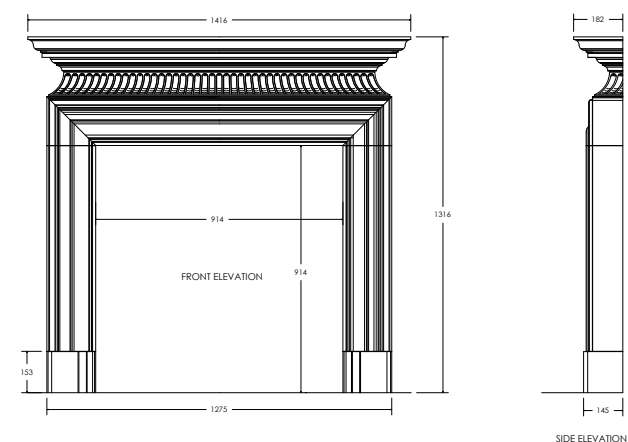
### THE BROCKHURST

Overall size 1444mmW x 1305mmH  
Opening 1065mmW x 1016mmH  
Shelf 1650mmW x 235mmD Footblock 117mmH x 165mmD



### THE DOWN HOUSE

Overall size 1330mmW x 1089mmH  
Opening 914mmW x 914mmH  
Shelf 1460mmW x 209mmD



### THE WALMER

Overall size 1275mmW x 1316mmH  
Opening 914mmW x 914mmH  
Shelf 1416mmW x 182mmD Footblock 153mmH x 145mmD

## Fire baskets

The English Heritage collection offers three fire basket designs



### KENWOOD I

Width 504mm Depth 344mm Height 355mm



### KENWOOD II

Width 516mm Depth 332mm Height 355mm



### KENWOOD III

Width 498mm Depth 372mm Height 384mm

# CHESNEYS

## LOCATIONS

We have four beautiful showrooms which all display a comprehensive range of our fireplaces, stoves and fires.

### CHELSEA DESIGN STUDIO

570 Kings Road,  
London SW6 2DY  
Telephone 020 7627 1410  
Email sales@chesneys.co.uk

### BATTERSEA

194-196 Battersea Park Road,  
London SW11 4ND  
Telephone 020 7627 1410  
Email sales@chesneys.co.uk

### HAMPSTEAD

465-467 Finchley Road,  
London NW3 6HS  
Telephone 020 7627 1410  
Email sales@chesneys.co.uk

### ST ALBANS

70 London Road,  
St Albans AL1 1NG  
Telephone 020 7627 1410  
Email sales@chesneys.co.uk

All showrooms are open  
Monday to Friday 9:00am – 5:30pm  
Saturday 10:00am – 5:00pm  
Hampstead closed on Fridays  
St Albans by Appointment only

All Showrooms are closed on Bank Holidays.

For details of UK nationwide stockists:

Telephone 020 3177 4200  
Email stockists@chesneys.co.uk  
chesneys.co.uk/find-a-stockist

www.chesneys.co.uk

Chesneys pursues a policy of continuing improvement in design and performance of its products. The right is therefore reserved to vary specifications without notice. For illustration purposes some chimneypieces and baskets may be shown in optional materials or finishes other than standard production specifications.

Bespoke prices are available on application.

© English Heritage  
www.english-heritage.org.uk

© CHESNEYS 2025 Vol 1



CHESNEYS

