



# Fitting Guidelines.

To be left with the customer after installation.

**BRANSCOMBE**

**Index.**

Front cover.

Fitting guidelines. Pages 1 to 13.

Front cover.

## **FITTING GUIDELINES FOR: BRANSCOMBE**

(These guidelines consist of 13 pages).

### **Important: Safety and Technical.**

- Please read all these guidelines and diagrams before commencing any installation.
- This fireplace / Inglebeam **should be** installed by an experienced, suitably qualified, and competent fireplace fitter.
- The fireplace / Inglebeam installation is **not** recommended as a DIY or single person installation.
- The fireplace / Inglebeam installation **must be** in accordance with Current National laws, Building Regulations, and any Rules in Force.  
Current Document J outlines various British Standards that cover all aspects of fireplace installation for England and Wales.  
The latest revision of BS 1251: 2015 refers to; Open fireplace components.  
The fixing of stonework is covered by BS 8298 “Code of practice for Design and Installation of Natural Stone Cladding and Lining.  
For stone and marble fireplaces refer to the Stone Federation of Great Britain, guidance on fire surrounds. ([www.stonefed.org.uk](http://www.stonefed.org.uk))
- This fireplace **must only** be installed onto floors with an adequate load-bearing capacity. If an existing construction does not meet this requirement, suitable measures (e.g., load distributing plate) must be taken. **Must be** in accordance with Current National laws, Building Regulations & any Rules in Force.
- Should any conflict occur between these guidelines and any Current National laws, Building Regulations, and any Rules in force then the Current National laws, Building Regulations and Rules in Force shall apply.
- The fireplace / Inglebeam installation **must be** in accordance with planning permission and local building control.
- Any solid fuel appliance installation completed in conjunction with this fireplace **must be** installed by a HETAS (England and Wales), registered installer or approved by your local building control officer. For further details go to [www.hetas.co.uk](http://www.hetas.co.uk) . For areas outside England and Wales you must check the registered installer that may be required to ensure the appliance is installed to Current National laws, Building Regulations, and any Rules in Force. Also refer to the appliance manufacturers instructions.
- Before any electrical components are connected to the main electrical supply such as fireplace / Inglebeam ambient lighting etc **must be** checked for suitability and safety by a suitably qualified electrician as below.
- Any electrical connections made whilst fitting this fireplace / Inglebeam **must be** made by a suitably qualified and registered electrician and meet the requirements of Current National laws, Building Regulations, and any Rules in Force.  
A recognised independent body for registered electricians in England, Wales, Scotland, and Northern Ireland is the National Inspection Council for Electrical Installation Contracting (NICEIC). Go to [www.niceic](http://www.niceic) where you will find a search facility to find NICEIC registered electricians.
- Any gas appliance installation made in conjunction with this fireplace / Inglebeam **must be** completed by a Gas Safe registered gas engineer (England and Wales), or equivalent for other Nations in accordance with the gas fire manufacturer’s instructions and Current National Laws, Building Regulations, and any Rules in Force. You can find more information and registered Gas Safe engineers at [www.gassaferegister.co.uk](http://www.gassaferegister.co.uk)
- Only install the fireplace / Inglebeam to a suitable solid brick wall of sound construction and suitable to support the full weight of the fireplace / Inglebeam. The brick wall **must** meet the requirements of Current National laws, Building Regulations, and any Rules in Force.

- If the fireplace / Inglebeam cannot be permanently fixed to a solid brick wall, such as block work, studwork, or any other type of structure, then we recommend that you consult an architect or structural engineer for advice.
- The Inglebeam **must not** be used as a constructional lintel or in any load bearing situations.
- The fireplace / Inglebeam is only suitable for interior installations.
- All fireplace / Inglebeam mechanical fixings **must be** Stainless-Steel and be totally corrosion and heat proof and of adequate size and strength to fix the fireplace / Inglebeam safely & securely.
- The consequences of failure of a fireplace / Inglebeam incorrectly installed and secured are extremely serious. It is essential that the fireplace / Inglebeam is installed and secured to withstand foreseeable abuse such as a child pulling down on a cantilevered shelf / Inglebeam etc.
- Fixing dowels or alternatively threaded studs' nuts and washers **must be used** when fitting the Inglebeam. The Inglebeam and any other fireplace overhanging components **must be** adequately restrained in all instances, as they are liable to tip forward. It is imperative to ensure any Inglebeam or fireplace overhanging components are securely fixed into the brick wall so there is no possibility of any piece tipping and falling.
- **Never** cut the dowels or threaded studs supplied to any Inglebeam product or fireplace.
- **All** dowels or threaded studs with nuts and washers supplied to any Inglebeam, or fireplaces **must be** used.
- Always inform the user when the fireplace / Inglebeam can be used for the first time considering the full drying times for resins and adhesives etc that have been used.
- Fixing brackets **must be** used when installing the fireplace / Inglebeam.
- Lock wire with anchorage points **must be** used when installing the fireplace.
- The fireplace / Inglebeam **must be** completely adhered to the brick wall with suitable adhesive. Such products should only be used for applications approved by the manufacturer. If there is any doubt, the adhesive manufacturer should be consulted.
- Gypsum based products is not recommended as an adhesive and should **not** be used.
- **Never** use adhesive alone to fit the fireplace / Inglebeam.
- Bracket fixings, anchorage points and dowels to be installed into brickwork, **not** plaster / render.
- All mechanical fixings to be chased into the mounting wall brickwork to enable complete contact to all mating rear surfaces of the fireplace to the brick wall, this is required so a total bond can be made when adhering the fireplace Inglebeam parts to the brick wall.
- The fireplace / Inglebeam is **not** suitable for any open burning grates or appliances and **must not** be used.
- Ensure that the chimney register plate and the stove flue pipe is not fixed or touching the Inglebeam or fireplace, this will cause excessive heat transfer resulting in damage.
- Ensure all mechanical fixings do not obstruct total face to face contact of any fireplace Inglebeam mating parts.
- Use suitable heat proof white or clear stone silicone adhesive between **all** mating stone pieces. (Ensure to protect fireplace visible stone surfaces from silicone over spill).
- **Never** drag fireplace mating stone pieces together when fixing, as this could chipping and scratching.
- Grouting of stone joints can be made by using suitable white tile glue ensuring you wash of residue with clean water.
- It is recommended that after installation and when the fireplace has completely dried, that a suitable stone sealer is used to seal all visible stone surfaces, only when the appliances being used is switched off and the appliance and fireplace are completely cold. Refer to your fireplace retailer for advice. (This applies to natural stone materials only).
- You **must** supply and fit, in correct position a data plate showing all correct information in accordance with Current National laws, Building Regulations and any Rules in Force.

- Ensure that purpose provided room ventilation is provided in accordance with Current National laws, Building Regulations, and any Rules in Force.
- Ensure these fitting guidelines together with the fireplace Customer Care & Safety sheet are given to the customer. Subsequently these to be passed on to any new homeowner or occupier.

### **Important.**

Ensure the fireplace / Inglebeam is fixed to the brick wall safely and securely and fitted correctly to all Current National laws, Building Regulations, and any Rules in Force.

If this cannot be achieved **do not install** the fireplace / Inglebeam until any fault is rectified, to ensure a safe & secure fireplace / Inglebeam installation.

### **Safety precautions.**

- Use all necessary safety clothing, for example:
- Suitable dust masks where there is a risk of dust contamination.
- Suitable protective gloves.
- Suitable Protective footwear.
- Suitable Protective eye goggles.
- Never wear loose clothing or jewellery.
- Ensure long or loose hair is adequately protected, so as not to be a hazard when using tools etc.
- Ensure all fitting tools and equipment to be used are in good working order and safety approved and suitable for the use intended.
- Always comply with all Current Health & Safety Regulations.
- This fireplace has parts that are irregular in shape and above 25kg in weight, therefore installation is recommended for more than one person or suitable lifting equipment to be used.

### **Weight of Beam & leg.** *(All weights are approximate).*

#### **Beam**

**Aggregate (Solid).**

- 1200mm wide: 55kgs.
- 1350mm wide: 60kgs.
- 1500mm wide: 5kgs.

**Ceramax (Hollow).**

- 1200mm wide: 14kgs.
- 1350mm wide: 16kgs.
- 1500mm wide: 21kgs.

#### **Leg**

**Aggregate (Solid).**

30kgs each leg.

**Ceramax (Hollow).**

12kgs each leg.

### **Types of fires suitable for the Branscombe.**

**Note:** Other fireplace components will be required before the Branscombe with legs and any appliance can be installed, check with the retailer the specification required.

- Closed burning multi fuel, or wood burning stoves manufactured to <sup>UK</sup>CA<sup>UK</sup>NI standards of compatible size for the fireplace, chimney, and flue.

**Note:** *The stove and builders opening used must be of a suitable size to comply with the minimum clearances to the fireplace and beam.*

- Closed burning gas stoves manufactured to CE standards of compatible size for fireplace, chimney, and flue.

**Note:** *The stove and builders opening used must be of a suitable size to comply with the minimum clearances of the fireplace and beam.*

- Electric effect fires manufactured and approved to <sup>UK</sup>CA<sup>UK</sup>NI standards suitable for the fireplace fire opening.

## **Clearances.**

- Refer to page 12 for beam clearances.
- Refer to page 13 for leg clearances.

## **Important:**

Refer to the stove manufacturer's instructions to check if the appliance being used requires higher clearances than listed to the drawings on pages 12 and 13 as these must be respected. Refer to the fireplace manufacturer's instructions for any other parts that may be used in conjunction with the Branscombe beam and legs to check if the clearances require to be higher than listed to the drawings on pages 12 and 13 as these must be respected.

## **Chimney Type.**

- Class 1. The chimney and flue **must be** in accordance with Current Building Regulations and any Rules in Force, with a suitable builder opening and flue, for your selected fireplace and appliance combination.
- Chimneys and flues **must be** swept and tested by an approved chimney sweep prior to fireplace installation.

## **Fireplace / Inglebeam inspection and precautions.**

- Before installation the fireplace / Inglebeam **must be** thoroughly checked for faults or damage. If any fault or damage is observed the fireplace / Inglebeam **must not** be installed, and the problems reported to your fireplace retail supplier. No claims of this nature will be accepted after the fireplace / Inglebeam is installed.
- **Ensure** the Branscombe beam and legs are handled with **care and never dropped.**
- **Always protect** the Branscombe beam and legs from any substance, the finish used to each beam and leg is water based to give fire resistance. Any fluid, plaster/ render etc that contacts the beam or legs is liable to cause damage.
- **Never** use any type of masking tape to protect the Inglebeam and legs as it will be possible to remove the Inglebeam surface finish when the masking tape is removed.

## **Fitting Guidelines.** *(To be used in conjunction with the diagrams).*

### **This fireplace will require other fixing materials including:**

- Suitable stainless-steel screws, washers, and wall plugs.
- Heat resistant silicone adhesive suitable for stone, brickwork & masonry in clear or white finish that must have a minimum temperature rating range from  $-20^{\circ}\text{c}$  to  $+1200^{\circ}\text{c}$ .

#### **Important.**

When silicone adhesive is mentioned in the guidelines then the above is the minimum requirement.

- Heat resistant Thixotropic two-part chemical anchor resin suitable for stone, brickwork, masonry, and metal with a minimum temperature range from  $-20^{\circ}\text{c}$  to  $+300^{\circ}\text{c}$ .

#### **Important.**

When Thixotropic chemical resin is mentioned in the guidelines then the above is the minimum requirement.

- Suitable thread locking fluid.
- Suitable sealer for brickwork.

Always follow the manufacturer's instructions for all adhesives and cements.

### **Important:**

**Note:** Refer to the manufacturer's instructions for other any other components that maybe installed with the Branscombe, for example: Hearth, chamber etc.

### **Important.**

If the Branscombe has been ordered to a non-standard size, it is often required to be manufactured with more dowel or threaded stud fixings and brackets than our standard sized models. These extra dowel or threaded stud, and bracket fittings **must be** installed as described below for our standard models. **Never** cut or remove any dowel or threaded stud or bracket that is supplied with the Branscombe.

- ⚠ **Do not** contaminate the beam and legs with plaster or any other substance including water.
- ⚠ **Do not** seal the surface finish of the beam and legs.
- ⚠ Ensure the area around the Branscombe fitting area is restricted to all persons and animals until all fitting materials have fully dried and cured and all fireplace components are deemed to be installed correctly and safely.

### **Important:**

Our Inglebeam range is manufactured in two types of material, either aggregate (solid) or Ceramax (hollow) depending on the customer's request, it is essential that the material used is identified to ensure the correct installation procedures are undertaken. Refer to drawings.

- 1) With suitable testing equipment check for live electrical cables or gas pipes and any other obstructions or connections that maybe obscured to the area of intended fireplace, chamber and Inglebeam installation. If found use a suitably qualified person to remove and make safe.
- 2) Remove all wall coverings and emulsion in area of intended fireplace / Inglebeam installation.
- 3) In properties with traditionally plastered / rendered brick walls the plaster / render to be cut back to enable the fireplace / Inglebeam to be fixed directly to the brickwork behind. The plaster / render can then be made good around the fireplace / Inglebeam after installation. The plaster / render to be cut back and removed from the area of fireplace / Inglebeam installation, remove up to approximately 10mm outside the profile of fireplace / Inglebeam to be installed. All fixing brackets and fixings to be recessed into brickwork to enable all fireplace / Inglebeam parts to mate with the brick wall without obstruction. This is good practice as there will always be a risk of the fireplace / Inglebeam becoming unstable should a failure of the plaster / render occur.
- 4) Ensure the chimney brickwork face is completely sound, dry, dust and contamination free before installation. Seal all fixing areas with appropriate sealer. (Note: subject to adhesive manufacturer's instructions.
- 5) Correctly prepare the chimney builders opening. Refer to current Building Regulations and any Rules in Force including the appliance manufacturers instructions that relates to the appliance that is going to be installed to the fireplace / Inglebeam.

### **Beam and legs with Dowel fixings and strap brackets.**

*Identify the leg material either Aggregate (solid) or Ceramax (hollow).*

- a) **Ceramax only:** Ensure all the threaded dowels and all threaded inserts to the beam and each leg are fully clean and contamination free. Apply suitable thread locking fluid to all threads to each dowel whilst being screwed into each beam and leg insert, screw each fixing dowel fully into each beam and leg threaded insert and tighten. **Warning.** Do not over tighten.  
Continue installation as below.

### Legs.

- b) ***Solid aggregate and Ceramax:*** To each leg, pull the left- and right-hand outer strap brackets straight to protrude to each side of the leg, pull the inner brackets straight and reward. To each leg mark the position of each leg bracket and the outline of each leg to the brick wall to your intended mounting position suitable for your chimney, fire opening and closed burning stove.
- c) Dry fit each leg to the brick wall in a suitable position. Mark both leg bracket positions to the brick wall for suitable stainless-steel steel wall plugs, screws, and washers. Note: The outer brackets are fixed to the face of the brick chimney, the inner brackets are fixed to the builders opening brick return. Remove both legs. Drill the wall at your pre marked bracket positions to accommodate suitable stainless-steel steel wall plugs. Fit wall plugs.
- d) Use silicone adhesive to bond all rear mating surfaces of each leg to the brick wall. Using suitable stainless-steel steel screws and washers through each bracket securely fix both legs to the brick wall.

### Beam.

- e) Pull the left- and right-hand fixing bracket located to the rear of the beam straight above the beams top surface. Mark each beam fixing dowel and outline of beam in correct position above the legs to the brick wall.
- f) Drill a hole into the brick wall at each beam dowel fixing position using a drill bit that is double the diameter of the beam dowel. Ensure the holes are of adequate depth to fully accommodate all dowels to enable the complete rear surface of the beam to be in contact with the brick wall. The holes must be of adequate size and in correct position to ensure the beam does not have to be forced into the holes and allow space for the thixotropic chemical resin to create a total bond around each dowel. ***Warning.*** If the beam dowels are forced into the holes within the brick wall this will create a very large force that will cause damage and cracking to the beam either immediately or later.
- g) Using a 6mm diameter masonry bit; drill an angled airway from the base of each dowel hole exiting above the dowel hole to the brick wall surface. (This is required to allow air to escape when adding Thixotropic chemical resin to the dowel holes within the brick wall).
- h) Ensure all dowel holes and beam dowels are clean, and contamination free. Ensure the rear surface of the beam and the surface of the brick wall are totally clean and contamination free. Seal brickwork subject to silicone adhesive manufacturer's instructions.
- i) Dry fit the beam to the brick wall. Mark the bracket positions to the brick wall for suitable stainless-steel steel wall plugs, screws, and washers. Take dimensions for suitable trestles to be used when permanently fixing the beam to the brick wall. The trestles must be able to support the weight of the beam and be stable whilst all adhesives and resins are curing. Locate or manufacture suitable trestles. Remove beam. Drill the brick wall at your pre marked bracket positions to accommodate suitable stainless-steel steel wall plugs. Fit wall plugs.
- j) Use thixotropic chemical resin to fully fill all beam dowel holes within the brick wall. Use silicone adhesive to bond all mating surfaces of the beam to the brick wall and legs. Ensure the two types of adhesives do not make contact. Position the beam dowels into the dowel holes within the brick wall containing the uncured Thixotropic chemical resin. Ensure the dowels are fully located into the holes to enable the rear surface of the beam to be fully bonded to the brick wall with the silicone adhesive. Use suitable trestles that are stable to support the weight of the beam in correct position. Using suitable stainless-steel steel screws and washers through each beam bracket and securely fix the beam to the brick wall.
- k) When all resins and glues are fully cured, (please read Thixotropic resin and adhesive manufacturer's instructions for use, safety and curing times etc). Remove trestles.
- l) Make good the wall, plaster / render around the Inglebeam and legs ensuring nothing is spilt onto the finished surface.

- m) **Never** use any type of masking tape to protect the Inglebeam and legs as it will be possible to remove the Inglebeam surface finish when the masking tape is removed.
- n) **Ensure** the installation area around the Branscombe is restricted to all people and animals until all fitting materials have fully dried and cured and all fireplace components are deemed to be installed correctly and safely.
- o) **Inform** the customer / user of the time required before any appliance can be used after the installation is complete.

**Warning:** Do not seal the Inglebeam or legs as this will damage the surface finish.

### **Beam and legs with threaded stud, nut, washer fixings and strap brackets.**

*Identify the leg material either Aggregate (solid) or Ceramax (hollow).*

- a) **Ceramax only:** Ensure all the threaded dowels and all threaded inserts to the beam and each leg are fully clean and contamination free. Apply suitable thread locking fluid to all threads to each dowel whilst being screwed into the beam and leg inserts, screw each fixing dowel fully into the beam and leg threaded insert and tighten. **Warning.** Do not over tighten.

Continue installation as below.

#### **Legs.**

- b) **Solid aggregate and Ceramax:** To each leg, pull the left- and right-hand outer strap brackets straight to protrude to each side of the leg, pull the inner brackets straight and reward. To each leg mark the position of each leg bracket and the outline of each leg to the brick wall to your intended mounting position suitable for your chimney, fire opening and closed burning stove.
- c) Dry fit each leg to the brick wall in a suitable position. Mark both leg bracket positions to the brick wall for suitable stainless-steel steel wall plugs, screws, and washers. Note: The outer brackets are fixed to the face of the brick chimney, the inner brackets are fixed to the builders opening brick return. Remove both legs. Drill the wall at your pre marked bracket positions to accommodate suitable stainless-steel steel wall plugs. Fit wall plugs.
- d) Ensure all mating rear surfaces to each leg and the front surface of the brick wall are totally clean and contamination free. Seal brickwork subject to the silicone adhesive manufacturer's instructions.
- e) Use silicone adhesive to bond all rear mating surfaces of each leg to the brick wall. Using suitable stainless-steel steel screws and washers through each bracket securely fix both legs to the brick wall.

#### **Beam.**

##### ***Solid aggregate and Ceramax:***

Pull the left- and right-hand fixing bracket located to the rear of the beam straight above the beams top surface. Mark each beam fixing dowel and outline of beam in correct position above the legs to the brick wall.

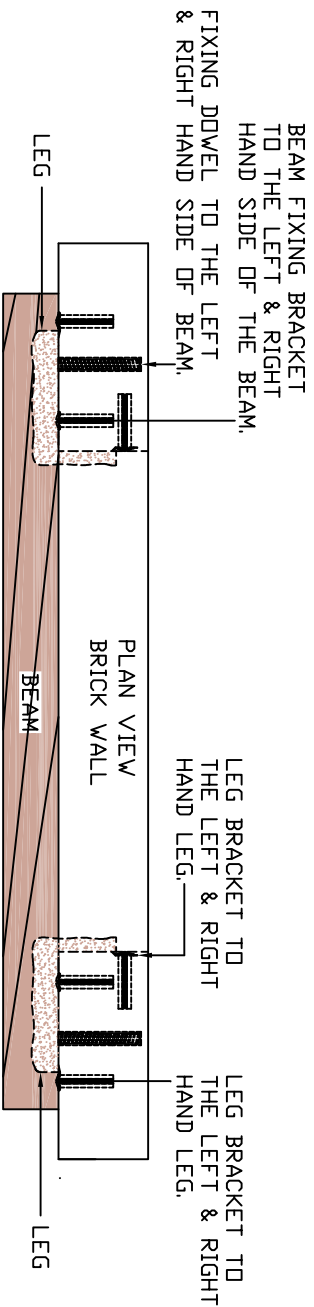
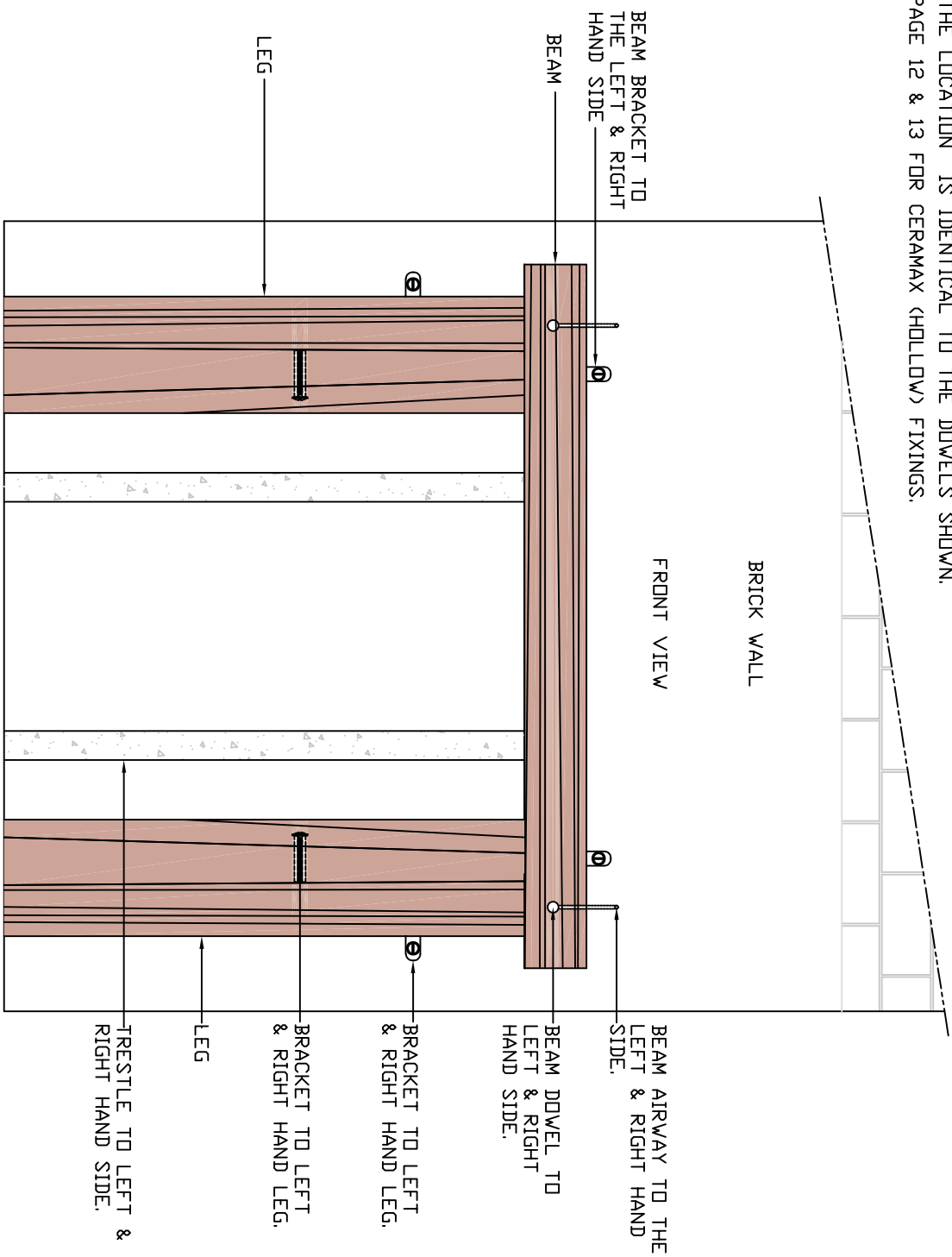
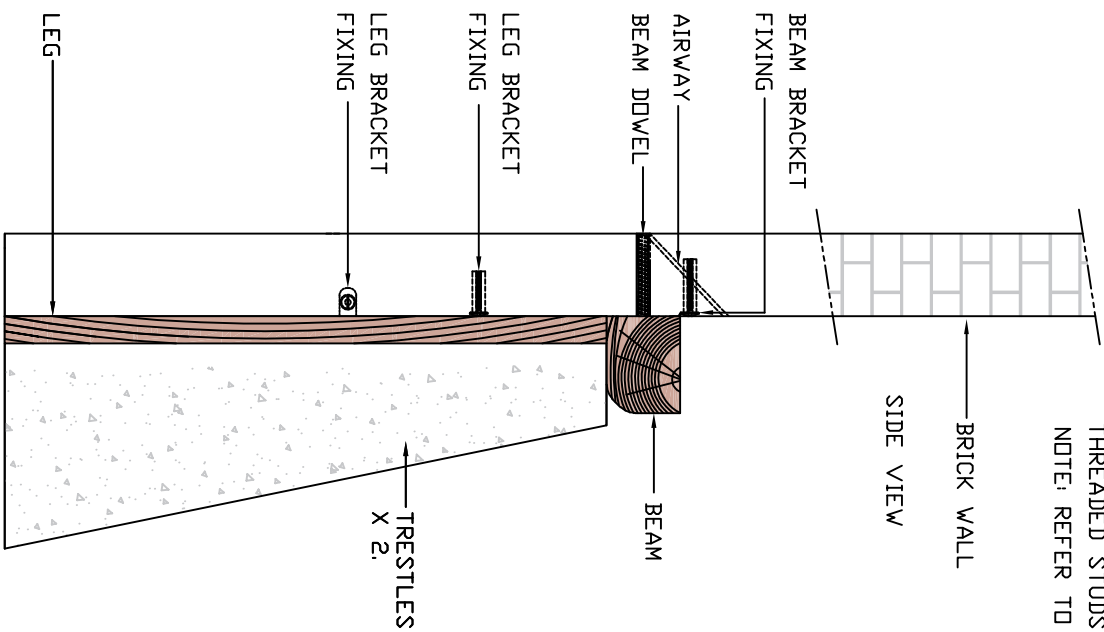
- f) Drill a hole into the brick wall at each beam threaded stud fixing position using a bit that is just slightly larger than the diameter of the threaded studs; ensure to drill completely through the brick wall. The holes must be of adequate size and in correct position to ensure the beam threaded studs do not have to be forced into the holes. **Warning.** If you force the beam studs into the holes this will create a very large force that will cause damage and cracking to the beam either immediately or later.
- g) Dry fit the beam to the brick wall. Mark each bracket position to the brick wall for suitable stainless-steel steel wall plugs. Take dimensions for suitable trestles to be used when permanently fixing the beam to the brick wall. The trestles must be able to support the weight of the beam and be stable whilst all resins and adhesives are curing. Locate or manufacture

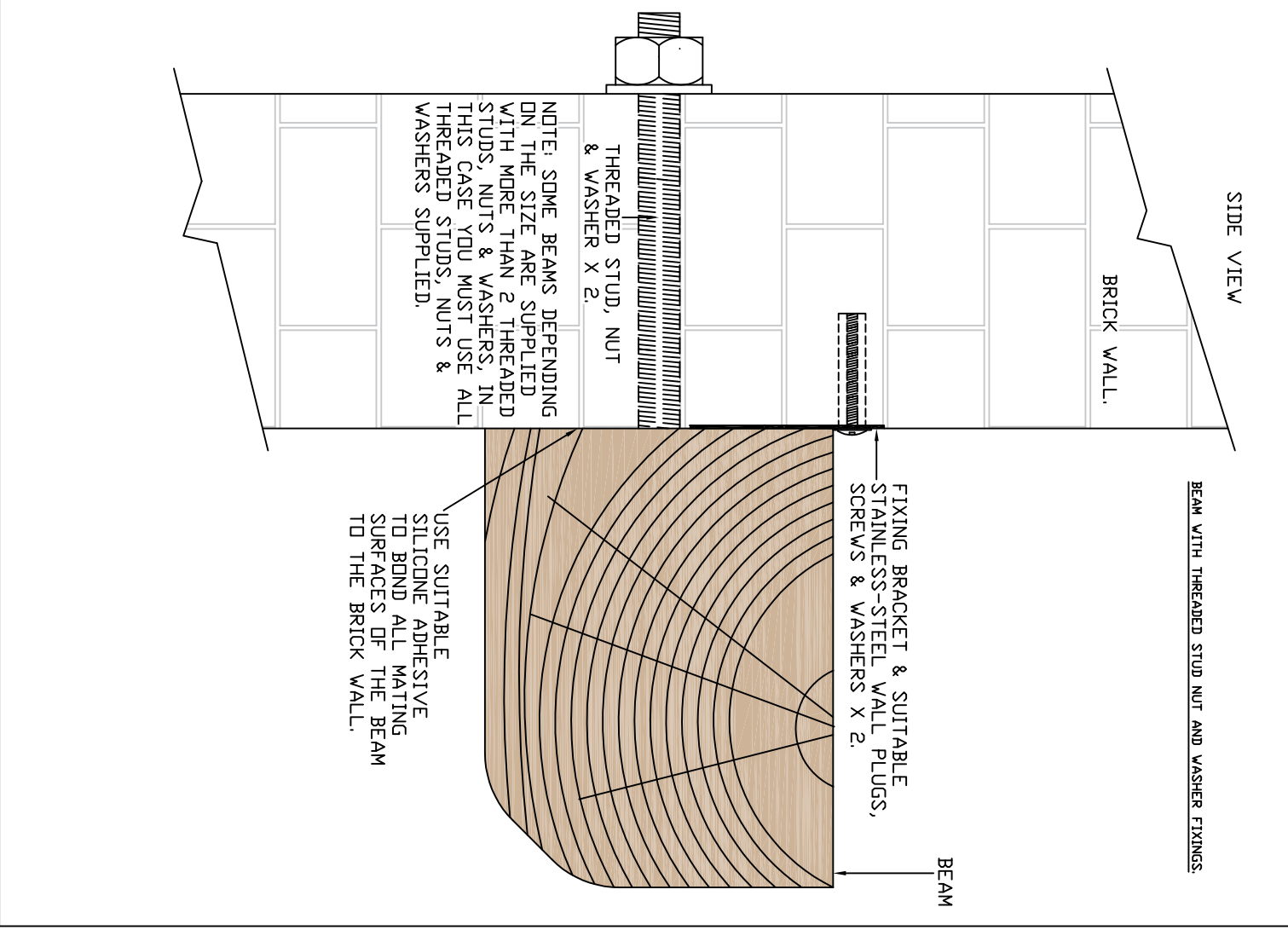
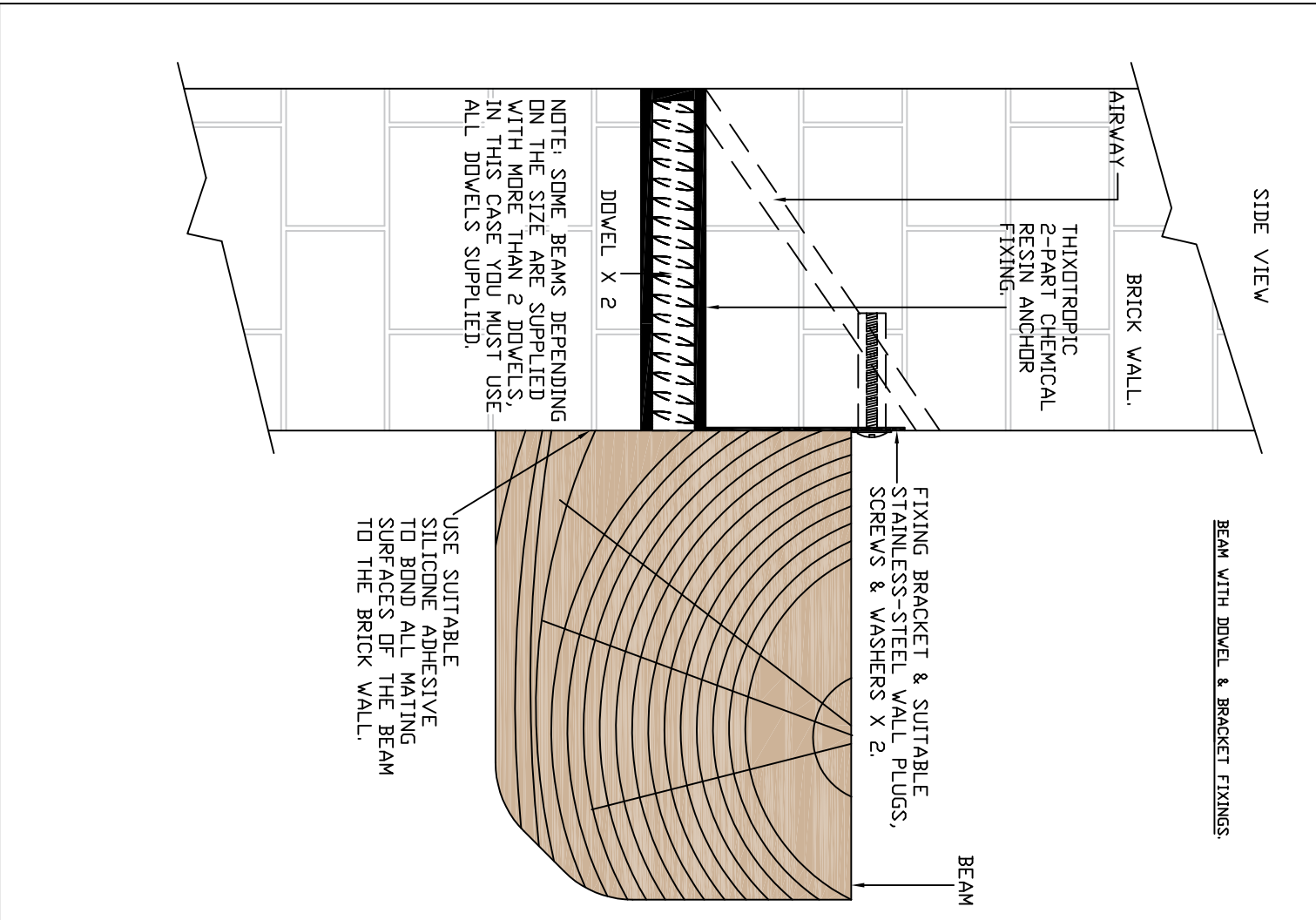
suitable trestles. Remove the beam. Drill the brick wall at your pre marked bracket positions to accommodate suitable stainless-steel steel wall plugs. Fit wall plugs.

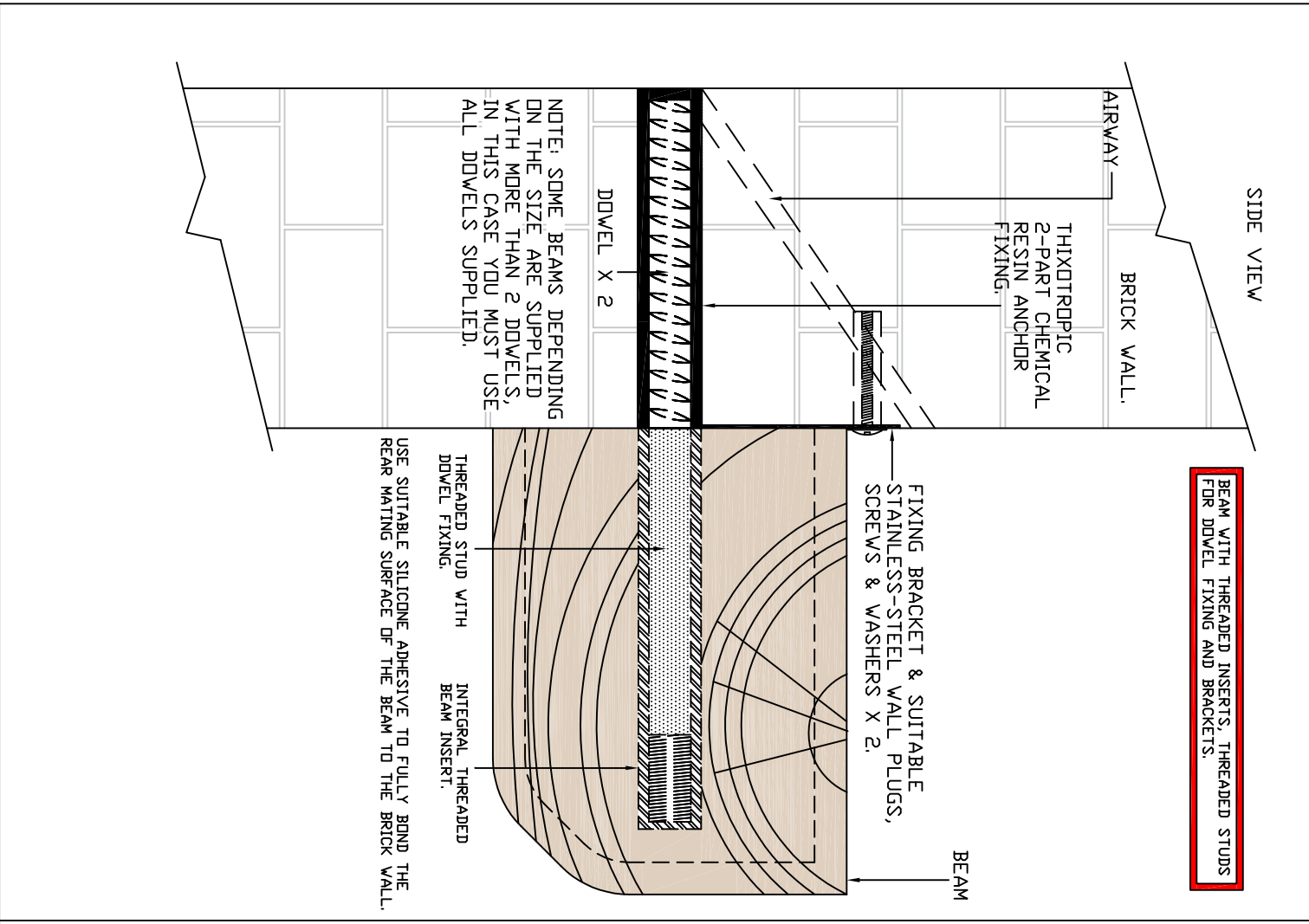
- h) Ensure the rear surface of the beam and the front surface of the brick wall are totally clean and contamination free. Seal brickwork subject to the silicone adhesive manufacturer's instructions.
- i) Use silicone adhesive to all mating surfaces of the beam to the brick wall. Position the beam threaded studs through the corresponding stud holes within the brick wall. Ensure the threaded studs are fully located into the holes to enable the rear surface of the beam to be fully bonded to the brick wall with the silicone adhesive.
- j) Position trestles into position to support the weight of the beam.
- k) Ensure the threaded studs are fully clean without contamination. Place the washers onto the threaded studs, use suitable thread and nut locking fluid and screw the nuts onto each threaded stud to the rear side of the brick wall. Fully tighten the nuts ensuring the beam is fully against the surface of the brick wall ensuring a total bond has been made between the brick wall and the beam. **Warning.** Do not over tighten the stud nuts as this will cause damage to the beam.
- l) Using suitable stainless-steel steel screws and washers through each beam bracket and securely fix the beam with brackets to the brick wall.
- m) When all adhesives have fully cured (refer to manufacturer's instructions for use, safety and curing times etc). Remove trestles.
- n) Make good the wall, plaster / render around the Inglebeam and legs ensuring nothing is spilt onto the finished surface.
- o) **Never** use any type of masking tape to protect the Inglebeam and legs as it will be possible to remove the Inglebeam surface finish when the masking tape is removed.
- p) **Ensure** the installation area around the Branscombe is restricted to all people and animals until all fitting materials have fully dried and cured and all fireplace components are deemed to be installed correctly and safely.
- q) **Inform** the customer / user of the time required before any appliance can be used after the installation is complete.

**Warning:** Do not seal the Inglebeam or legs as this will damage the surface finish.

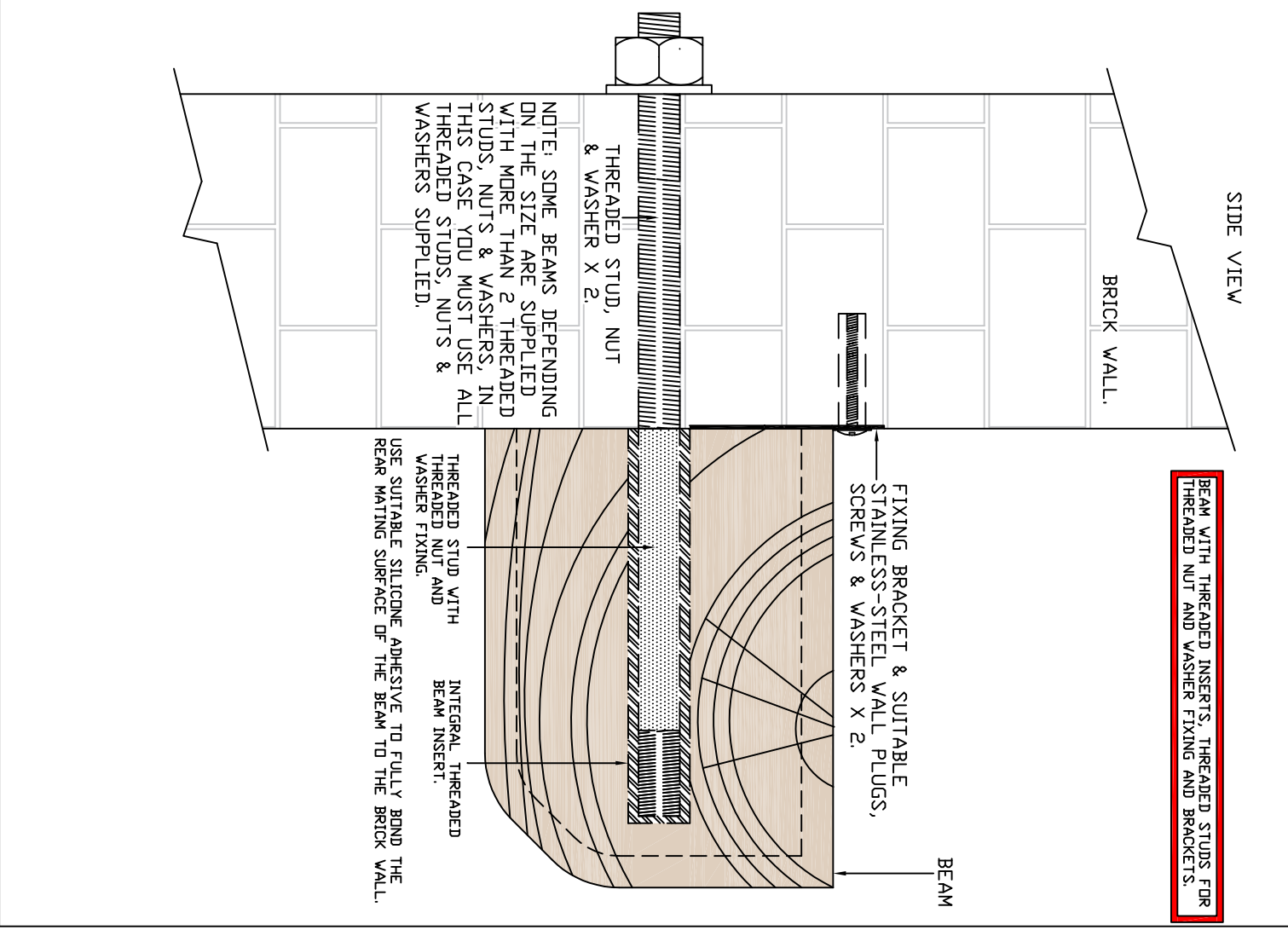
POSITION OF DOWELS, AIRWAYS, & BRACKETS, IF USING ALTERNATIVE  
 THREADED STUDS THE LOCATION IS IDENTICAL TO THE DOWELS SHOWN.  
 NOTE: REFER TO PAGE 12 & 13 FOR CERAMAX (HOLLOW) FIXINGS.







**BEAM WITH THREADED INSERTS, THREADED STUDS FOR DOWEL FIXING AND BRACKETS.**

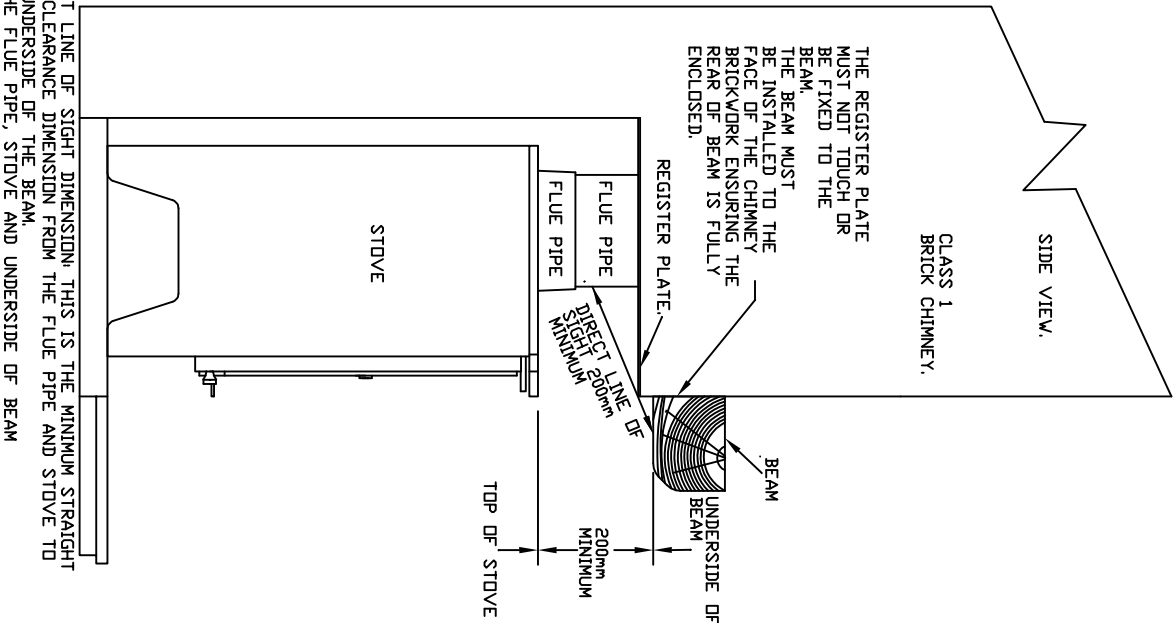


**BEAM WITH THREADED INSERTS, THREADED STUDS FOR THREADED NUT AND WASHER FIXING AND BRACKETS.**

CLEARANCES WHEN THE STOVE IS NOT PLACED PARTIALLY OR COMPLETELY UNDER THE BEAM.

**IMPORTANT!**

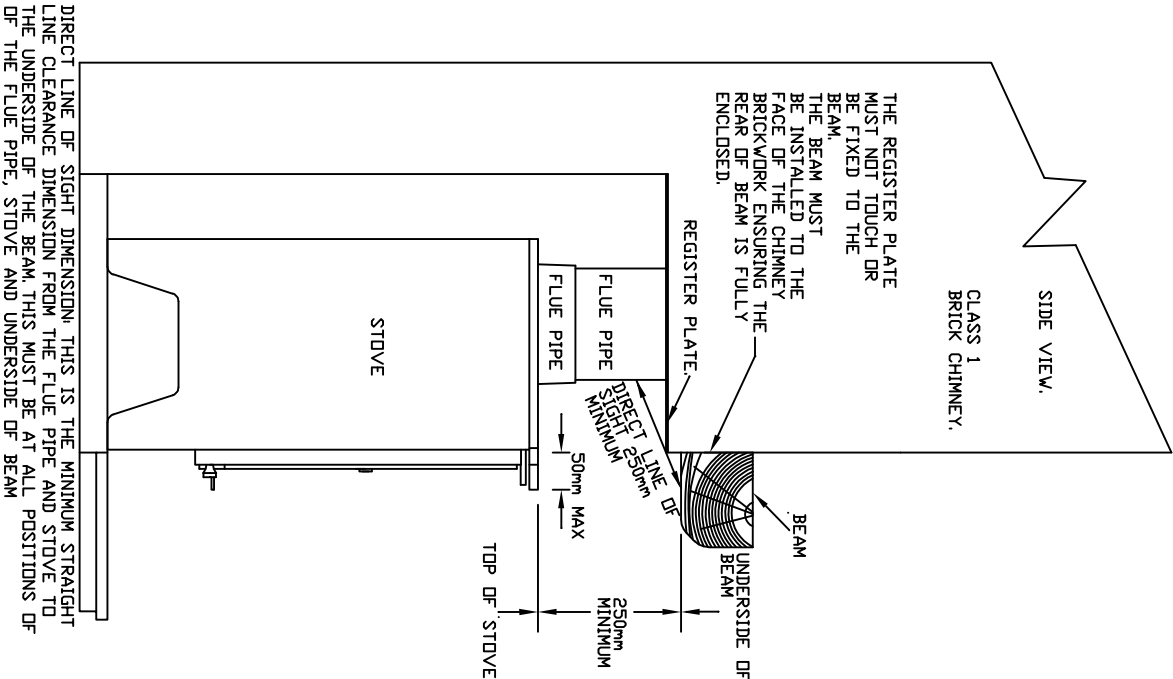
THE DIMENSIONS SHOWN APPLY TO CLOSED MULTI FUEL, WOOD BURNING STOVES AND GAS STOVES WITH AN APPROVED NOMINAL HEAT OUTPUT NOT ABOVE 5KW AND OPERATED AS STATED IN THE STOVE MANUFACTURER'S INSTRUCTIONS. FOR EVERY 1KW ABOVE AN APPROVED NOMINAL HEAT OUTPUT OF 5KW ADD 50MM EXTRA TO THE DIMENSIONS SHOWN. EXAMPLE: IF THE STOVE HAS A NOMINAL HEAT OUTPUT OF 7KW YOU REQUIRE TO ADD 100MM TO THE DIMENSIONS SHOWN. ALWAYS REFER TO THE STOVE MANUFACTURER'S INSTRUCTIONS TO CHECK IF THE CLEARANCES REQUIRE TO BE LARGER THAN SHOWN, IF SO THESE MUST BE RESPECTED.



CLEARANCES WHEN THE STOVE IS PLACED NO MORE THAN A MAXIMUM OF 50MM UNDER THE BEAM.

**IMPORTANT!**

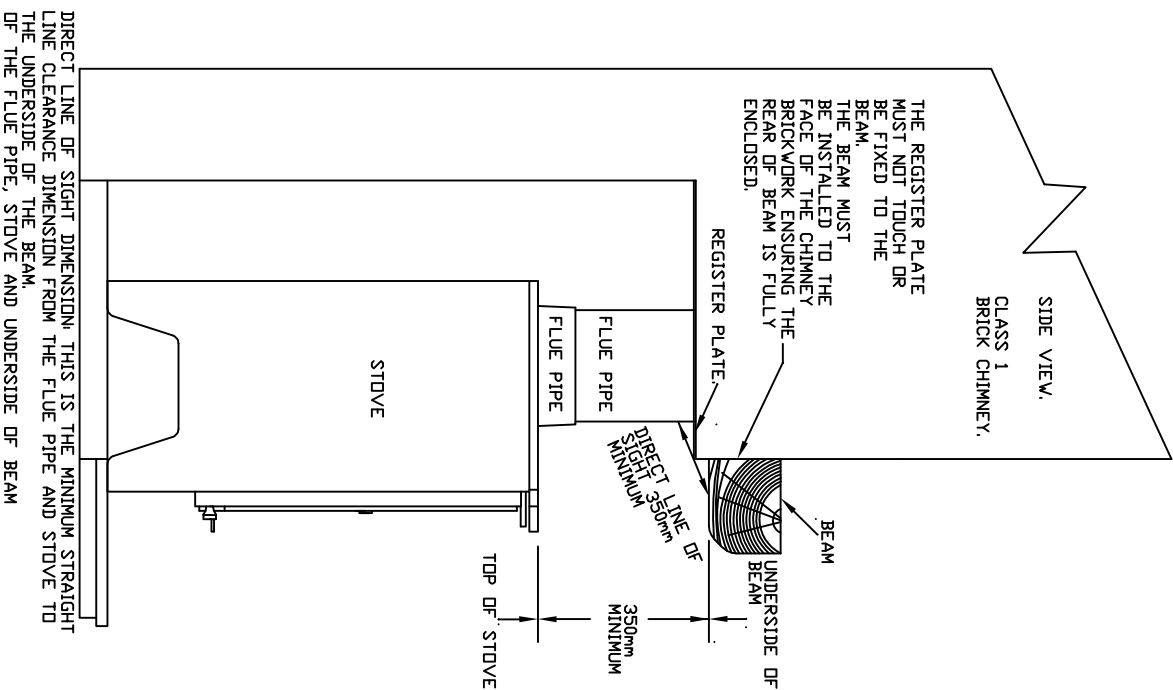
THE DIMENSIONS SHOWN APPLY TO CLOSED MULTI FUEL, WOOD BURNING STOVES AND GAS STOVES WITH AN APPROVED NOMINAL HEAT OUTPUT NOT ABOVE 5KW AND OPERATED AS STATED IN THE STOVE MANUFACTURER'S INSTRUCTIONS. FOR EVERY 1KW ABOVE AN APPROVED NOMINAL HEAT OUTPUT OF 5KW ADD 50MM EXTRA TO THE DIMENSIONS SHOWN. EXAMPLE: IF THE STOVE HAS A NOMINAL HEAT OUTPUT OF 7KW YOU REQUIRE TO ADD 100MM TO THE DIMENSIONS SHOWN. ALWAYS REFER TO THE STOVE MANUFACTURER'S INSTRUCTIONS TO CHECK IF THE CLEARANCES REQUIRE TO BE LARGER THAN SHOWN, IF SO THESE MUST BE RESPECTED.



CLEARANCES WHEN THE STOVE IS PLACED MORE THAN 50MM UNDER THE BEAM.

**IMPORTANT!**

THE DIMENSIONS SHOWN APPLY TO CLOSED MULTI FUEL, WOOD BURNING STOVES AND GAS STOVES WITH AN APPROVED NOMINAL HEAT OUTPUT NOT ABOVE 5KW AND OPERATED AS STATED IN THE STOVE MANUFACTURER'S INSTRUCTIONS. FOR EVERY 1KW ABOVE AN APPROVED NOMINAL HEAT OUTPUT OF 5KW ADD 50MM EXTRA TO THE DIMENSIONS SHOWN. EXAMPLE: IF THE STOVE HAS A NOMINAL HEAT OUTPUT OF 7KW YOU REQUIRE TO ADD 100MM TO THE DIMENSIONS SHOWN. ALWAYS REFER TO THE STOVE MANUFACTURER'S INSTRUCTIONS TO CHECK IF THE CLEARANCES REQUIRE TO BE LARGER THAN SHOWN, IF SO THESE MUST BE RESPECTED.



STOVE MINIMUM CLEARANCES FROM THE EXTREMITIES OF EACH SIDE OF THE STOVE TO EACH LEG:  
 CLOSED BURNING STOVES WITH A NOMINAL HEAT OUTPUT NOT ABOVE 5KW AND OPERATED AS STATED IN THE STOVE  
 MANUFACTURER'S INSTRUCTIONS: 150MM.

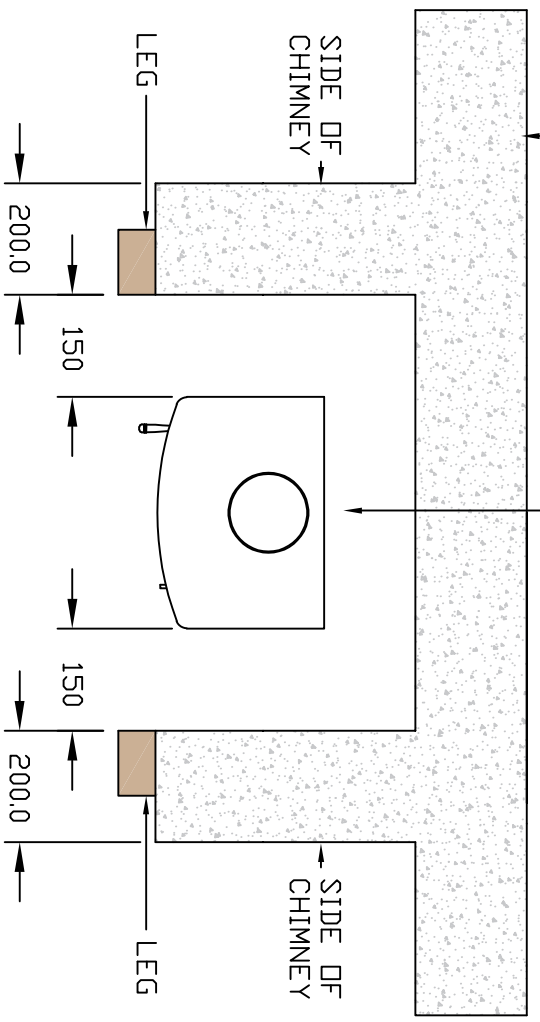
STOVES WITH A NOMINAL HEAT OUTPUT ABOVE 5KW: FOR EVERY 1KW ABOVE A NOMINAL HEAT OUTPUT OF 5KW AN ADDITIONAL  
 20MM CLEARANCE FROM EACH SIDE OF THE STOVE TO EACH LEG IS REQUIRED.

EXAMPLE: IF THE STOVE HAS AN APPROVED NOMINAL HEAT OUTPUT OF 7KW AND THE CHIMNEY IS CONSTRUCTED OF BRICKWORK  
 OF A MINIMUM THICKNESS OF 200MM, THE SIDE CLEARANCES FROM THE STOVE TO EACH LEG WOULD BE INCREASED TO 190MM.

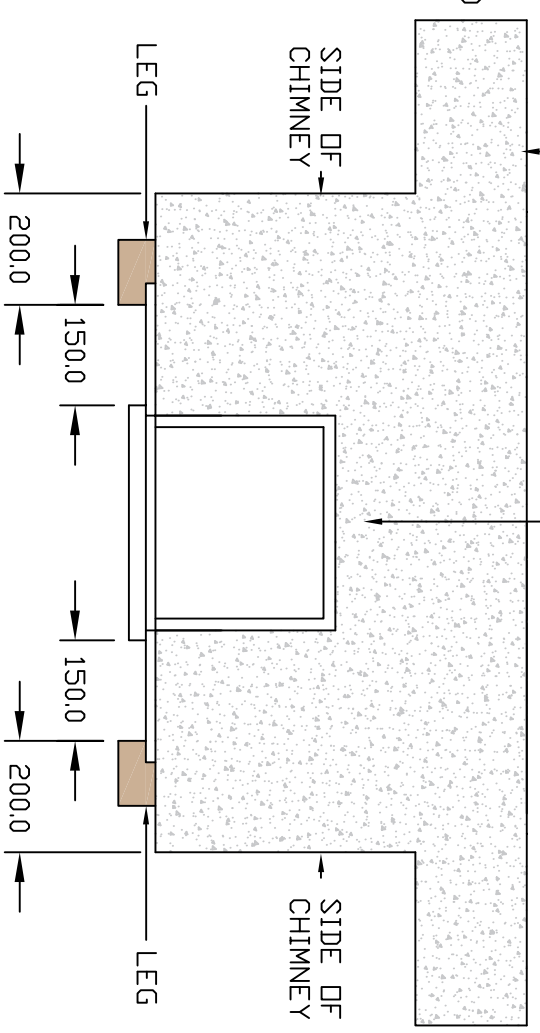
ALWAYS CONSULT THE STOVE MANUFACTURER'S INSTRUCTIONS TO CHECK IF THE CLEARANCES REQUIRE TO BE GREATER THAN SHOWN  
 AS THESE MUST BE RESPECTED.

ALWAYS CHECK BUILDING REGULATIONS AND ANY RULES IN FORCE FOR THE CHIMNEY AND FIREPLACE REQUIREMENTS WHEN  
 WHEN FITTING AN APPLIANCE.

PLAN VIEW  
 REAR OF CHIMNEY  
 EXAMPLE IF USING A FREE STANDING  
 STOVE, NO REQUIREMENT FOR REBATE  
 IN LEGS OR THE BEAM.



PLAN VIEW  
 REAR OF CHIMNEY  
 EXAMPLE USING AN INSET STOVE WITH  
 REBATES TO LEGS AND BEAM AND A  
 COMPATIBLE BACK PANEL.



CLASS 1 NON COMBUSTIBLE BRICK CHIMNEY  
 200MM MINIMUM THICKNESS



CLASS 1 NON COMBUSTIBLE BRICK CHIMNEY  
 200MM MINIMUM THICKNESS

DIMENSIONS REFER TO UNTREATED PRODUCTS.