

# MIDTHERM

FLUE SYSTEMS

2023

# HT-S

## Twin Wall HT-S Insulated Flue System

### The ideal solution for:

Multi-fuel  
Woodburning  
Biomass  
Pellet  
Gas & Oil

Made in the UK  
100mm - 300mm available from stock  
Powder Coated Stock Available

### Contact

[sales@midthermflue.co.uk](mailto:sales@midthermflue.co.uk)  
[midthermflue.co.uk](http://midthermflue.co.uk)  
0333 456 8000

# Twin Wall HT-S

## High Temperature Insulated Flue System

Designed with a sleek modern appearance, easy and consistent connection, with laser welded seams and machine formed joints using the latest techniques and technology.

HT-S products are all manufactured and stocked at our factory in the United Kingdom allowing for fast delivery and on demand manufacturing for any special requirements.

Available from stock in 100mm to 300mm, 350mm made to order

130mm and 150mm Matt Black available from stock

### Suitable For:

- Gas and Oil
- Solid Fuel
- Multi-fuel
- Pellet
- Biomass

4 hour fire rating, with 450°C operating temperature

Constructed from stainless steel 0.5mm 316 2b inner and 0.5mm 304 BA outer

Locking Bands included on all components with male connectors



## 20 Year Warranty

Available for registered and properly maintained HT-S installations, please see our website for full details, requirements and registration. Visit our website to register your warranty online.



[midtherm.com](http://midtherm.com)

### Quality Assurance

Midtherm HT-S is manufactured under ISO 9001 accredited quality management systems, with CE Certification, and we are also a HETAS registered manufacturer.



# Specification & Finish

## HT-S Specification

Internal Diameter	Prod. Dia Order Code	04	05	06	07	08	10	12	14
	I/D mm	100	130	150	180	200	250	300	350
External Diameter	Ancillaries Dia. Order Code	06	07	08	09	10	12	14	16
	O/D mm	152	178	203	229	254	305	356	406
Construction	Precision rolled and laser welded pipe, continuous seam weld on bends. Lining material - 0.5mm 316 (EN1.4404). Casing material - 0.5mm 304 (EN1.4301) bright annealed. Insulation type - high density mineral wool 128kg/m <sup>3</sup> 25mm thick.								
Temp - Max Operating	450 degrees C normal operating. Soot fire resistance 1000 degrees C.				4 Hour Fire Rating.				

## HT-S Designations

Designation Type	Product BS EN 1856-1 System Chimney	Corresponding Installation BS EN 1443
Solid Fuel 100-300mm	T450 N1 D Vm L50050 G(50)	T450 N1 D V3 G(50)
Solid Fuel 350mm	T450 N1 D Vm L50050 G(75)	T450 N1 D V3 G(75)
Gas, Oil < 40Pa	T200 N1 D Vm L50050 O(30)	T200 N1 D V3 O(30)
Gas, Oil > 40Pa (with sealant)	T200 P1 D Vm L50050 O(30)	T200 P1 D V3 O(30)

Designations only apply to systems installed in compliance with the appropriate installation instructions.

## Product Codes

Product	Code	Notes
HT-S	08	100mm through to 350mm
HT-S PCMB	41	Other colours and items available
Ancillaries	00	Size on outer diameter of the flue
Rotorvent	36	See page 11

## Powder Coating

Powder Coated products are available and can be used in visible installations.

130mm and 150mm HT-S powder coated Matt Black flue (PCMB) components are available from stock, and we are also able to powder coat any of our products to your requirement.

High temperature powder coating, which has a slightly different finish to the standard powder coating, is used on certain items in the powder coated Matt Black range (where there is direct connection onto the stove or in close proximity to the stove). If this variation is not acceptable for particular projects we recommend ordering the full visible system in the higher temperature PCMB finish (not suitable for use outside or where it may be exposed to the elements). 1 year warranty applies see Maintenance Schedule.



Items with this symbol are painted in high temperature matt black.

# Typical Installation

## Installation Type:

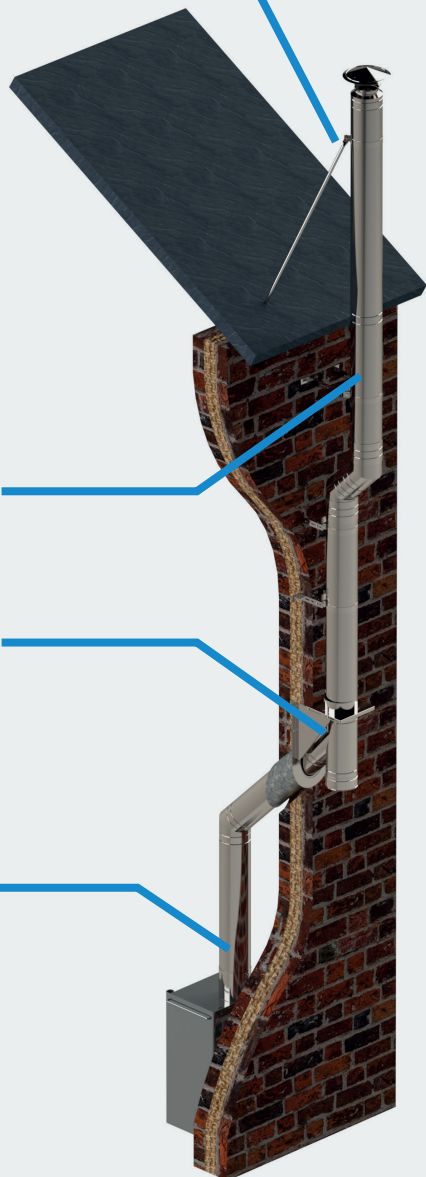
### External Installation

Telescopic flue  
roof bracing kit

Adjustable  
wall band and  
extension kit

Wall Sleeve and  
intermediate wall  
support

Starter length for  
direct appliance  
connection



### Internal Installation

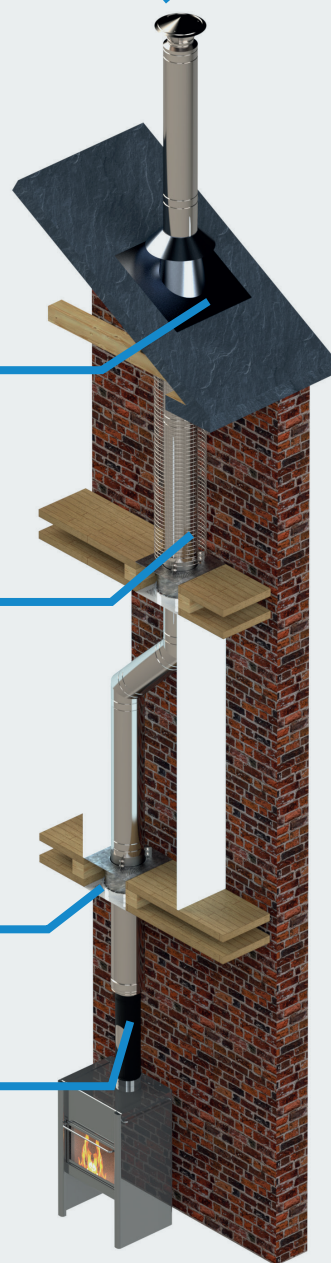
Standard Cowl  
termination

Flashing and storm  
collar

Mesh enclosure

Combustible floor  
support kit

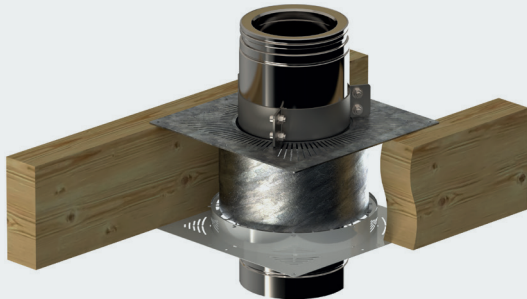
Appliance  
connector for  
connection from  
Vitrelux to HT-S



# Installation Requirements

## Internal Installation

To comply with BS EN 1856-1, specific requirements exist for anywhere a HT-S flue system penetrates a combustable floor, this is in order to provide ventilation to the space created and prevent excessive heat building up.



## Data Plates

To comply with building regulations, a completed data plate must be installed and on display with all new installations.

**MIDTHERM**  
Flue Systems Ltd.

IMPORTANT SAFETY INFORMATION  
This label must not be removed or covered

Product Type:  System Chimney  Metal Liner

Product Name: \_\_\_\_\_

Installation Designation: EN 1443 - T \_\_\_\_\_  
Example: EN 1443 - T450-N1-03-G50

Suitable for condensing appliances: Yes  No

Distance to combustibles in mm: \_\_\_\_\_

Nominal Size: 100  150  180  200  210   
300  350  Other: \_\_\_\_\_ mm

Product Type:  Connecting Flue Pipe

Product Name: \_\_\_\_\_

Installation Designation: EN 1443 - T \_\_\_\_\_  
Example: EN 1443 - T450-N1-03-G600

Suitable for condensing appliances: Yes  No

Distance to combustibles in mm: \_\_\_\_\_

Nominal Size: 100  150  180  200   
Other: \_\_\_\_\_ mm

Tel: 0333 456 8000  
www.midtherm.co.uk

Property Address: \_\_\_\_\_  
Post code: \_\_\_\_\_

The Hearth & Chimney installed in the: \_\_\_\_\_

Are suitable for: \_\_\_\_\_

Installers Company Name: \_\_\_\_\_

Installed by: \_\_\_\_\_ Installed on: \_\_\_\_\_

Address and Telephone No: \_\_\_\_\_

Other Information: \_\_\_\_\_

5 0 5 2 1 4 7 0 2 4 9 7 0

Order Code 009000

## Carbon Monoxide Alarms

Carbon Monoxide alarms are required with all installations.

We stock carbon monoxide alarm which features a 7 year life span and warranty. Check with the sales office for availability.



Order Code 009000A

## Installers

Flue systems are designed to safely and legally carry away toxic fumes and exhaust heat without risk of fire, therefore It is required that all HT-S flue system installations are carried out by accredited installers and in compliance with all current regulatory requirements.



## Get in touch...

Please contact us or visit our website for detailed certification, installation, maintenance and warranty information.

**Telephone:** 0333 456 8000

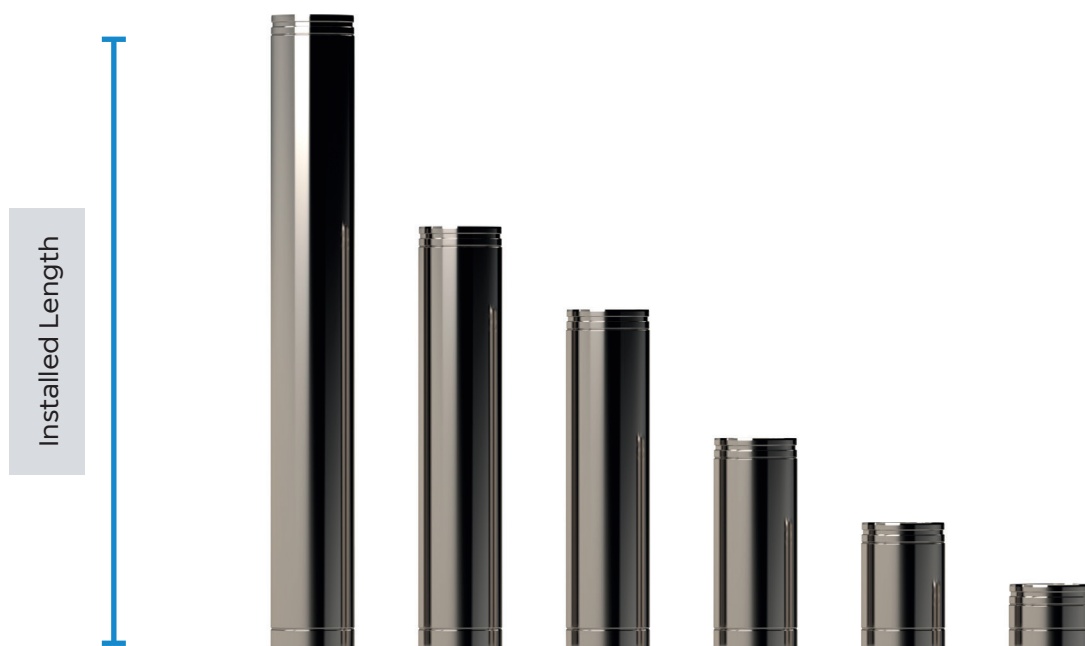
**Email:** sales@midthermflue.co.uk

**Online:** www.midthermflue.co.uk

# Lengths

## Standard Lengths

	100mm	130mm	150mm	180mm	200mm	250mm	300mm	350mm
1500mm (1452mm inst)		080205	080206	080207	080208			
1000mm (952mm inst)	080104	080105	080106	080107	080108	080110	080112	080114
800mm (752mm inst)	085604	085605	085606	085607	085608			
500mm (452mm inst)	080304	080305	080306	080307	080308	080310	080312	080314
300mm (252mm inst)	083404	083405	083406	083407	083408	083410	083412	083414
150mm (102mm inst)	084704B	084705B	084706B	084707B	084708B	084710B	084712B	



## Lengths with 0.9mm Inner Liner



Length	Installed Length	Code
1000mm	955mm	0801**A
500mm	455mm	0803**A

Lengths that can be used in conjunction with an appliance connector with a 0.9mm inner to be installed directly to an appliance.

# Lengths



## Extension Length

Installed Length	Code
75mm - 350mm	0804**A
75mm - 350mm	0804**B

The Extension Length comes complete with a special locking band and provides an extension of 75mm to 350mm when slipped over a standard length. This can be used fully with any length starting from 500mm. When used on a 300mm length the minimum extension achieved would be 260mm. Sold fully insulated.



## Starter Lengths



Length	Installed Length	Code
1000	1095	0801**B
500	595	0803**B
500 c/w Clean Out Door	595	0803**E
1000 (1" Increasing)	1095	0801**C
500 (1" Increasing)	595	0803**C

Starter lengths are designed to be connected directly to an appliance and include an appliance connector and cover band. They are easy to install and give an aesthetically pleasing appearance of a seamless length straight from the appliance. Please note they are not suitable for appliances with a recessed spigot.



## Removable Starter Length

Installed Length	Code
330mm	0860**D

The length is manufactured with a .9mm inner and a clean out door with test point that can be removed to allow access to the inner door. This product is to be used when the provision of sweeping through the appliance is not available and to allow the stove to be moved after installation. It can also be installed to retrofit a stove when HT-S is already installed in situ.

Stocked in 130mm and 150mm. Made to order, in 180mm and 200mm Internal Diameters.



## Lengths with Clean Out Door

Installed Length	Code
455mm	0803**D

The length is manufactured with a .9mm inner and a clean out door in 'Wrap Around' style that can be removed to allow access to the inner door. This product is to be used when the provision of sweeping through the appliance is not available.

Made to order, in 130-200mm Internal Diameters.



# Elbows & Tees

## Offset Dimensions for Elbows



Diameter Code			04	05	06	07	08	10	12	14
Length	Elbow	Dim	100	130	150	180	200	250	300	350
Without Length	15	O	32	33	33	34	35	37	38	40
		H	240	248	252	259	267	279	291	307
	30	O	71	75	78	82	85	92	99	105
		H	265	280	291	306	317	343	370	392
	45	O	117	124	132	139	147	161	177	191
		H	283	300	318	335	355	389	427	461
150	15	O	58	59	60	61	62	63	65	67
		H	338	346	350	358	366	378	389	405
	30	O	122	126	129	133	136	143	150	156
		H	353	368	380	395	406	432	458	480
	45	O	189	197	204	211	219	233	249	263
		H	355	373	390	407	427	461	499	533
300	15	O	97	98	98	99	100	102	104	106
		H	483	491	495	503	511	523	534	550
	30	O	197	201	204	208	211	218	225	231
		H	483	498	510	525	536	562	588	610
	45	O	296	303	310	317	325	339	355	369
		H	462	479	496	513	533	567	605	639
500	15	O	149	150	150	151	152	154	155	157
		H	676	684	688	696	704	716	728	743
	30	O	297	301	304	308	311	318	325	331
		H	657	672	683	698	709	735	761	784
	45	O	437	444	451	458	467	481	496	510
		H	603	620	637	654	675	709	746	780
800	15	O	228	229	230	230	231			
		H	975	981	989	995	1003			
	30	O	451	454	458	461	464			
		H	928	939	953	965	978			
	45	O	653	660	668	675	683			
		H	822	840	857	874	894			
1000	15	O	278	279	280	281	282	283	285	287
		H	1159	1167	1171	1179	1187	1199	1210	1226
	30	O	547	551	554	558	561	568	575	581
		H	1090	1105	1116	1131	1142	1168	1195	1217
	45	O	790	797	805	812	820	834	850	864
		H	956	973	991	1008	1028	1062	1100	1134
1500	15	O	407	408	409	410	411			
		H	1642	1650	1654	1662	1670			
	30	O	797	801	804	808	811			
		H	1523	1538	1549	1564	1576			
	45	O	1144	1151	1158	1165	1174			
		H	1310	1327	1344	1361	1382			



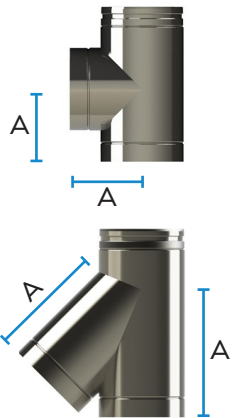
## Modular Tee

Code 0811\*\*

Modular Tees usually include a smaller branch size and are made to order. Please note that 'Installed height' and 'B' dimensions are the same as a 90° tee (Installed and A dimensions based on branch diameter, and B is based on body diameter).

# Elbows & Tees

## Tees



Diameter Code	04	05	06	07	08	10	12	14
---------------	----	----	----	----	----	----	----	----

### 90° Tee Code 0806\*\*

Internal Diameter	100	130	150	180	200	250	300	350
Installed Length	294	323	349	379	399	450	501	551
Dimension A	151	164	177	189	202	227	253	278

### 45° Tee Code 0807\*\*

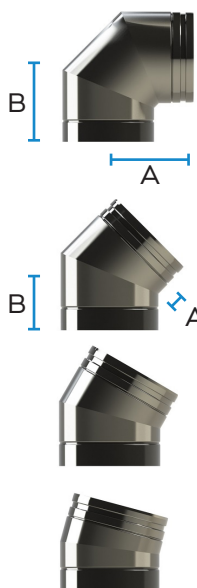
Internal Diameter	100	130	150	180	200	250	300	350
Installed Length	358	395	431	467	502	574	646	717
Dimension A	259	290	320	351	382	443	505	565



### Tee Cap Code 0808\*\* with 3/4" BSP Drain Code 0808\*\*A

Diameter Code	04	05	06	07	08	10	12	14
Internal Diameter	100	130	150	180	200	250	300	350
Installed Length	70							

## Elbows



Diameter Code	04	05	06	07	08	10	12	14
---------------	----	----	----	----	----	----	----	----

### 90° Elbow Code 0809\*\*

Internal Diameter	100	130	150	180	200	250	300	350
Dimension A	153	166	179	191	204	230	255	280
Dimension B	197	210	223	235	248	274	299	324

### 45° Elbow Code 0810\*\*

Dimension A	61	66	72	76	83	93	104	114
Dimension B	105	110	115	120	128	138	149	159

### 30° Elbow Code 0810\*\*A

Dimension A	50	54	58	61	64	71	78	84
Dimension B	94	99	102	106	109	116	123	128

### 15° Elbow Code 0810\*\*B

Dimension A	50	54	58	61	64	71	78	84
Dimension B	94	99	102	106	109	116	123	128

# Terminals

## Standard Cowls



<b>Standard Cowl</b>	<b>Code 0816**</b>
with Mesh	Code 0816**A
with Rain Shield	Code 0816**A
Double Inverted (DI Cowl)	Code 0817**

Diameter Code	04	05	06	07	08	10	12	14
Internal Diameter	100	130	150	180	200	250	300	350
Top Diameter	210	260	300	360	400	500	600	700
Overall Height	220	235	255	280	290	315	340	365

## Alternative Terminals

Diameter Code	04	05	06	07	08	10	12	14
---------------	----	----	----	----	----	----	----	----



<b>Swedish/Universal Cowl</b>	<b>Code 0818**</b>							
Internal Diameter	100	130	150	180	200	250	300	350
Top Diameter	200	230	280	330	380	460	550	640
Overall Height	250	295	325	353	400	475	550	625
Fitted with bird mesh for use on gas fired applications only.								



<b>Top Stub</b>	<b>Code 0820**</b>							
Internal Diameter	100	130	150	180	200	250	300	350
Overall Height	93							



<b>AD Cowl</b>	<b>Code 0855**</b>							
Internal Diameter	100	130	150	180	200	250	300	350
Top Diameter	180	230	280	320	380	460	550	640
Overall Height	305	380	450	450	610	660	750	840



<b>Rotorvent (with adaptor)</b>	<b>Code 3604**</b>							
Internal Diameter	100	130	150	180	200	250	300	350
Overall Height	495							



<b>Termination/Anchor Plate</b>	<b>Code 0819**</b>							
Diameter Code	04	05	06	07	08	10	12	14
Internal Diameter	100	130	150	180	200	250	300	350
Square Size	302	328	353	379	404	455	506	556
Installed Height	160							
For connecting from a brick chimney or fire chest to HT-S.								

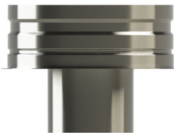
## Connectors



HT-S I/D	100	130	150	180	200	250	300	350
----------	-----	-----	-----	-----	-----	-----	-----	-----

### Appliance Connector with 0.9mm Liner **P+**

App Con	082904	082905	082906	082907	082908	082910	082912	082914
+ 0.9mm Liner	082904C	082905C	082906C	082907C	082908C	082910C	082912C	082914C
Overall Height	170							
Installed	115							
Tail Length	70							
Use 0.9mm inner when connecting directly onto a stove.								



### 1" Increasing Appliance Connector with 0.9mm Liner **P+**

1" Increasing	082904A	082905A	082906A	082907A	082908A	082910A	082912A	082914A
+ 0.9mm Liner	082904D	082905D	082906D	082907D	082908D	082910D	082912D	082914D
Overall Height	165							
Installed	120							
Tail Length	70							
Use 0.9mm inner when connecting directly onto a stove.								

## Adaptors



Diameter Code	04	05	06	07	08	10	12	14
---------------	----	----	----	----	----	----	----	----

### Transition Adaptor **P+**

**Code 0830\*\***

Internal Diameter	130	150						
Overall Height	495							
Installed	410							
Tail Length	40							

The Transition Adaptor should be treated as a piece of connecting flue pipe whilst designing the installation. Can be used directly off the stove or to make the transition from connecting flue pipe to HT-S. Made to order.



### TW-SW Adaptor

**Code 0828\*\***

Internal Diameter	100	130	150	180	200	250	300	350
Overall Height	170							
Tail Length	70							

For connecting the top of a twin wall system to a single wall system or to take a flex adaptor.



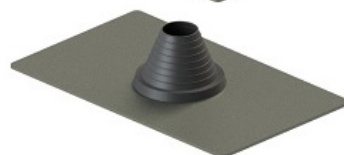
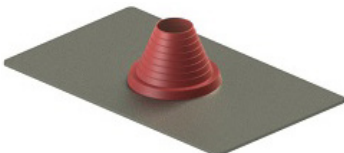
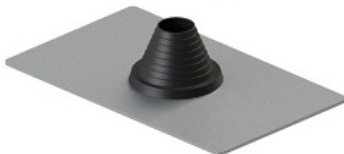
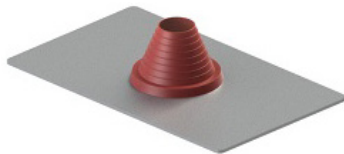
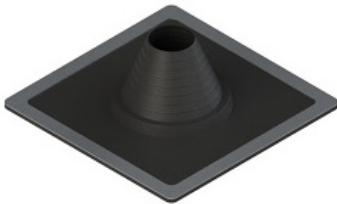
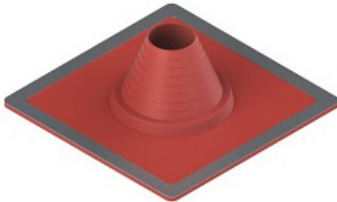
### HT-S - Flex Adaptor

**Code 3509\*\***

Internal Diameter	100	130	150	180	200	250	300	
Square Size	200mm							
Installed Height	120mm							

# Flexible Flashings

## Rubber Flashings



### Flexible Rubber Flashing

Size to suit Outside Diameter

Black Temp Range -55° - +100° Order Codes	Red Temp Range -55° - +225° Order Codes	To suit diameter range	Base Size
0021004	0020004	70-177mm	254 x 254mm
0021005	0020005	125-200mm	313 x 313mm
0021006	0020006	145-250mm	370 x 370mm
0021007	0020007	195-300mm	440 x 440mm
0021008	0020008	250-380mm	540 x 597mm
0021009	0020009	315-500mm	650 x 750mm

### Aluminium Base Rubber Flashings

Size to suit Outside Diameter

Black Temp Range -40° - +115° Order Codes	Red Temp Range -50° - +240° Order Codes	To suit diameter range	Base Size
0023004	0022004	100-150mm	450 x 600mm
0023006	0022006	180-255mm	600 x 800mm
0023007	N/A	175-380mm	750 x 900mm

### Acylead Base Rubber Flashings

Size to suit Outside Diameter

Black Temp Range -40° - +115° Order Codes	Red Temp Range -50° - +240° Order Codes	To suit diameter range	Base Size
0025004	N/A	100-150mm	450 x 600mm
0025006	0024006	150-280mm	600 x 850mm

Acrylic primer coating on lead sheet to assist safe handling.

## Fixing & Fitting

### Standard Fixing Kits

Code 002600

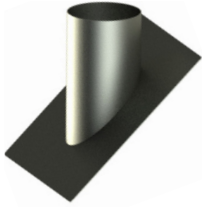
Contents : 12 Washer Type fasteners, hexagon colour caps, 1 x 80ml tube of silicone, 1 x 4.8 drill bit and 1 x fixing instruction leaflet.

### Retro Fit S/S Clips RFC

Code 002700

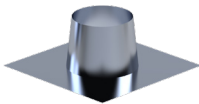
Retro fit clips for flexible rubber flashings. Not suitable for aluminium and Acylead base flashings.

# Standard Flashings



Lead Flashings								Code 0001**
HT-S I/D	100	130	150	180	200	250	300	350
Base Size (mm)	610mm Square				760mm Square			
Upstand (mm)	304mm Short Side							
Order Code Flat	06	07	08	09	10	12	14	16
Order Code 15°	06A	07A	08A	09A	10A	12A	14A	16A
Order Code 30°	06B	07B	08B	09B	10B	12B	14B	16B
Order Code 45°	06C	07C	08C	09C	10C	12C	14C	16C
Manufactured from 4lb lead. Installations should be finished off with a storm collar and sealed. Peak and special flashings are available to order.								

## Roof Plates

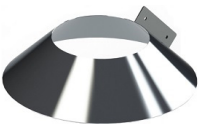


HT-S I/D	100	130	150	180	200	250	300	350
Flat Roof Plate AL								Code 0005**
Order Code	06	07	08	09	10	12	14	16
To suit HT-S O/D	152	178	203	229	254	305	356	406
Base Size (mm SQ)	400	400	500	500	600	650	700	750
Upstand Diameter	167	193	218	244	269	320	370	421



Adjustable Roof Plate AL (0-30 or 25-45)								Code 0005**
Order Code (0-30)	06A	07A	08A	09A	10A	12A	14A	16A
Order Code (25-45)	06B	07B	08B	09B	10B	12B	14B	16B
To suit HT-S O/D	152	178	203	229	254	305	356	406
Base Size (mm SQ)	550	600		700	800		850	
Upstand Diameter	177	203	228	254	280	330	380	431

## Storm Collars

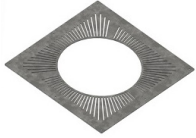


HT-S I/D	100	130	150	180	200	250	300	350
Cravat Type Storm Collar AL								Code 0006**
Order Code	06	07	08	09	10	12	14	16
To suit HT-S O/D	152	178	203	229	254	305	356	406
Collar Diameter	352	378	403	429	454	505	556	606
Height	100							



Washer Type Storm Collar AL								Code 0007**
Order Code	06	07	08	09	10	12	14	16
To suit HT-S O/D	152	178	203	229	254	305	356	406
Collar Diameter	272	298	323	349	374	425	476	526
Height	60							

# Combustible Floors

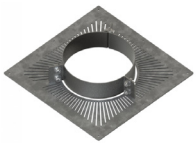


## Ventilated Top Plate (non-supporting)

Code 0043\*\*

HT-S I/D	100	130	150	180	200	250	300	350
Order Code	06	07	08	09	10	12	14	16
Square Size	322	346	373	399	424	475	526	626

The non supporting ventilated top plate is for use where the flue system penetrates floors but no load bearing support is required.



## Ventilated Support Plate with Collar

Code 0040\*\*

HT-S I/D	100	130	150	180	200	250	300	350
Order Code	06	07	08	09	10	12	14	16
Square Size	322	346	373	399	424	475	526	626

A load bearing support must be positioned every six metres.

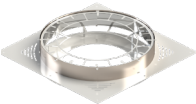


## Ventilated Firestop/Fire Sealing Collar

Code 0042\*\*

HT-S I/D	100	130	150	180	200	250	300	350
Order Code	06	07	08	09	10	12	14	16
Square Size	322	346	373	399	424	475	526	626

The collar attached to the plate houses and supports strips of material that expand when the activation temperature is exceeded, reducing gaps to restrict flame ingress.



## Covered Ventilated Firestop c/w Fire Collar

Code 0042\*\*A

HT-S I/D	100	130	150	180	200	250	300	350
Order Code	06	07	08	09	10	12	14	16
Square Size	322	346	373	399	424	475	526	626

Complete with a decorative cover and in a powder coated white finish that matches most ceilings. Only suitable for use when penetrating the ceiling in the same room as the appliance.



## Radiation Shield

Code 0041\*\*

HT-S I/D	100	130	150	180	200	250	300	350
Order Code	06	07	08	09	10	12	14	16
Diameter	225	247	274	296	325	376	427	477
Height	110-210							

The adjustable radiation shield can be extended to suit the joist height.

# Support Components



## Wall Band S/S

Code 0061\*\*

HT-S I/D	100	130	150	180	200	250	300	350
Order Code	06	07	08	09	10	12	14	16

Used to provide lateral support for a vertical flue. Standard gives 50mm clearance from a wall



## Wall Band Extension Kits S/S

Length	50-100	75-200	150-300
Order Code	0061A	0061B	0061C

Pair of extension arms to be used with any diameter wall band, which allow for clearance from the wall in the ranges as above.



## Intermediate Wall Support S/S

Code 0052\*\*

HT-S I/D	100	130	150	180	200	250	300	350
Order Code	06	07	08	09	10	12	14	16
Plate Sq	254	279	304	330	35	407	458	508
Side Height	340	365	390	416	440	500	570	620

For use as a load bearing intermediate support from a wall. Supplied complete with a support plate and collar. Set as standard 50mm from wall, with an additional 75mm adjustment for 100mm Diameter and 100mm adjustment on all other diameters on the plate. For more adjustment, please contact our sales team for pricing, 300mm maximum.

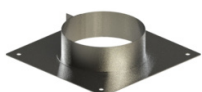


## Telescopic Base Support S/S

Code 0051\*\*

HT-S I/D	100	130	150	180	200	250	300	350
Order Code	06	07	08	09	10	12	14	16
Plate SQ	250	280	300	330	350	410	460	510
Flange SQ	300	330	350	380	400	460	510	560

Used to support a vertical flue run. Adjustable from 385mm to 585mm installed.



## Support Plate S/S

Code 0053\*\*

HT-S I/D	100	130	150	180	200	250	300	350
Order Code	06	07	08	09	10	12	14	16
Square Size	302	328	353	378	403	457	505	559

For where the flue penetrates a non-combustible floor. Also acts as a firestop plate. Supplied complete with support collar.

# Support Components



## Split Clip Band S/S

Code 0050\*\*

HT-S I/D	100	130	150	180	200	250	300	350
Order Code	06	07	08	09	10	12	14	16

Provides horizontal support or lateral stability.



## Guy Wire Bracket S/S

Code 0054\*\*

HT-S I/D	100	130	150	180	200	250	300	350
Order Code	06	07	08	09	10	12	14	16

Provides 3 fixing points for use with guy wires to enable lateral support of a vertical flue.



## Guy Wire Kit S/S

Code 005400A

Contents : 30m of 3mm wire, 12 bulldog clips, 3 strainers and 6 thimbles for use with guy wire bracket.

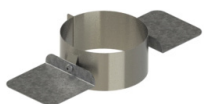


## Telescopic Flue Bracing Kit

Code 0055\*\*

HT-S I/D	100	130	150	180	200	250	300	350
Order Code	06	07	08	09	10	12	14	16

Kit includes 2 telescopic extension poles made from galvanised mild steel, 2 roof brackets and a support ring. Poles adjust from 1900mm - 3400mm. Used to provide additional support and rigidity above the roof line.

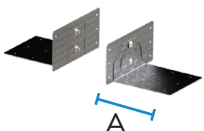


## Heavy Duty Rafter Support Bracket

Code 0056\*\*

HT-S I/D	100	130	150	180	200	250	300	350
Order Code	06	07	08	09	10	12	14	16
Wing Span	407	433	458	484	509	560	611	661

Heavy duty rafter support brackets are to be used where extra stability is required and maintains 50mm clearance from combustibles. Not load bearing.



## Universal Rafter Support Bracket

Code 005600A

Universal rafter support bracket maintains 50mm clearance from combustible materials and provides load bearing support. See installation instructions for details.

A = 135mm to 4mm hole centre.

# Sundry Components

HT-S I/D	100	130	150	180	200	250	300	350
Order Code	06	07	08	09	10	12	14	16



## Additional Locking Bands

Code 0033\*\*

Overall Height	50
Used to complete and secure joints. Please note all HT-S components, that have a male end, come with a locking band included.	



## Structural Locking Bands

Code 0833\*\*A

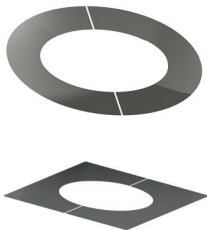
Overall Height	148
Structural locking bands to be used when extra stability is required.	



## Draught Stabilisers

Code 2701\*\*

Draught stabilisers are manufactured using 304 grade stainless steel and are designed to be fitted to an adapted appliance connector. These can be factory fitted upon request.



## Trim Plates

0031\*\*

HT-S I/D	100	130	150	180	200	250	300	350
Order Code Square	06	07	08	09	10	12	14	16
Order Code Round	06A	07A	08A	09A	10A	12A	14A	16A
Square Size (mm)	312	338	363	389	414	465	516	566

Trim plates are used to tidy holes cut in wall and suitable for T450 installations. Please specify angle and shape at ordering point. As standard trim plates have a 75mm coverage, specials made to order.

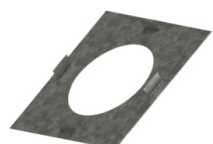
# Sundry Components



## Silicone Sealant

Code 008100

Available in 310ml Tubes. Suitable for temperatures upto 180°C.



## Firestop Spacer

Code 0030\*\*

HT-S I/D	100	130	150	180	200	250	300	350
Order Code	06	07	08	09	10	12	14	16
Square (mm)	302	328	353	378	404	455	506	556



## Galvanised Wall Sleeve

500 Length

Code 0032\*\*

500 Length, 45° Angle

Code 0032\*\*A

1000 Length

Code 0032\*\*B

1000 Length, 45° Angle

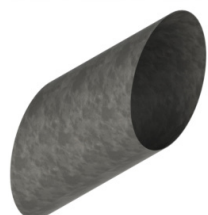
Code 0032\*\*C

280-380 Adjustable Length

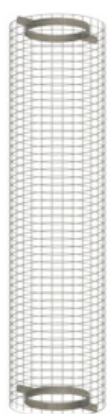
Code 0032\*\*D

280-380 Adjustable Length, 45° Angle

Code 0032\*\*E



HT-S I/D	100	130	150	180	200	250	300	350
Order Code	06	07	08	09	10	12	14	16
Sleeve Diameter	203	229	254	280	305	356	406	457



## Meshed Enclosure

Code 0853\*\*

HT-S I/D	100	130	150	180	200	250	300	350
Order Code	04	05	06	07	08	10	12	14
Mesh Diameter	254	278	303	329	254	406	457	508
Overall Height	1220 (other lengths available on request)							

Designed to be used in a loft space to prevent accidental contact with the flue. The galvanised mesh enclosure comes complete with 2 spacing clamps that provide 50mm clearance from the flue outer.

# Complementary Ranges

## Midtherm Pyrus V

### Wood Burning Stove

The Midtherm Pyrus V is contemporary, efficient, and built to last.

Our achieved efficiency ratings go above and beyond current regulations, future proofing your stove for years to come.

Sophisticated baffling and air inlet paths ensure the majority of the heat makes its way into the room, not out of the chimney.

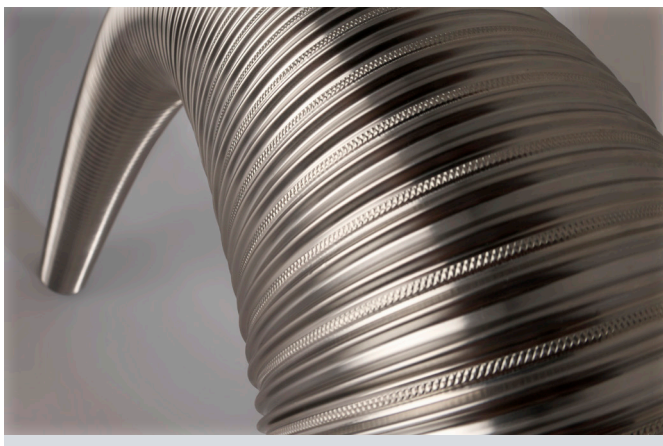
Please see our "Perfect Flame" brochure for more details.



## Midflex

### Flexible Chimney Liner

Midtherm Midflex is a class 1 flexible flue liner, that is produced in both 316L and 904L grade stainless steel. It is used for lining existing brick chimneys. Midflex has been tested for a maximum operating temperature of 600°C.



## Vitrelox

### Vitreous Enamelled Flue

Vitrelox flue pipe is a single wall connecting flue pipe with a high temperature, acid resistant enamel coating. Available in both a matt and gloss black finish. Lengths and elbows are available with doors which allow for cleaning access and can be removed and refitted without chipping.



# MIDTHERM

FLUE SYSTEMS

---

Midtherm House, New Road, Dudley, DY2 8SY  
t 01384 458800 w [midtherm.com](http://midtherm.com)

Flue Systems | Laser Cutting | Powder Coating | Enamelling  
Re-engineering & Fabrications | UV Air Sanitisers | Catering & Sanitary Equipment

